

## Anti-TPST1 antibody

<b>Cat. No.</b>	ml162402
<b>Package</b>	25 µl/100 µl/200 µl
<b>Storage</b>	-20°C, pH7.4 PBS, 0.05% NaN <sub>3</sub> , 40% Glycerol

### Product overview

<b>Description</b>	Anti-TPST1 rabbit polyclonal antibody
<b>Applications</b>	ELISA, WB
<b>Immunogen</b>	Synthetic peptide of human TPST1
<b>Reactivity</b>	Human, Mouse, Rat
<b>Content</b>	0.4 mg/ml
<b>Host species</b>	Rabbit
<b>Ig class</b>	Immunogen-specific rabbit IgG
<b>Purification</b>	Antigen affinity purification

### Target information

<b>Symbol</b>	TPST1
<b>Full name</b>	tyrosylprotein sulfotransferase 1
<b>Synonyms</b>	TANGO13A
<b>Swissprot</b>	O60507

### Target Background

The tyrosylprotein sulfotransferases TPST-1 and TPST-2 catalyze the sulfation of tyrosine residues within secreted and membrane-bound proteins, such as cell adhesion molecules, G-protein-coupled receptors, coagulation factors, serpins, extracellular matrix proteins, and hormones. Although both TPST-1 and TPST-2 utilize 3'-phosphoadenosine 5'-phosphosulfate as their sulfate donor, they differ in their substrate specificity.

订购热线: 4008-898-798

#### Applications

##### Western blotting

Predicted band size: 42 kDa

Positive control: 231, 293T and Lovo cells

Recommended dilution: 200-1000

Gel: 8%SDS-PAGE

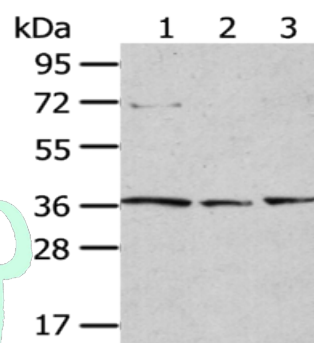
Lysate: 40 µg

Lane 1-3: 231 cells, 293T cells, Lovo cells

Primary antibody: ml162402(TPST1 Antibody) at dilution 1/200

Secondary antibody: Goat anti rabbit IgG at 1/8000 dilution

Exposure time: 2 minutes



##### ELISA

Recommended dilution: 1000-2000

联系电话: 4008-898-798, 021-61725725

联系QQ: 2881505695, 2881505696

邮箱: [mlbio\\_cn@yeah.net](mailto:mlbio_cn@yeah.net)

网址: [www.mlbio.cn](http://www.mlbio.cn)