

Anti-SEC22B antibody

Cat. No.	ml125656
Package	25 µl/100 µl/200 µl
Storage	-20°C, pH7.4 PBS, 0.05% NaN ₃ , 40% Glycerol

Product overview

Description	Anti-SEC22B rabbit polyclonal antibody
Applications	ELISA, WB, IHC
Immunogen	Fusion protein of human SEC22B
Reactivity	Human, Mouse, Rat
Content	1.2 mg/ml
Host species	Rabbit
Ig class	Immunogen-specific rabbit IgG
Purification	Antigen affinity purification

Target information

Symbol	SEC22B
Full name	SEC22 homolog B, vesicle trafficking protein (gene/pseudogene)
Synonyms	ERS-24; SEC22L1
Swissprot	O75396

Target Background

The protein encoded by this gene is a member of the SEC22 family of vesicle trafficking proteins. It seems to complex with SNARE and it is thought to play a role in the ER-Golgi protein trafficking. This protein has strong similarity to Mus musculus and Cricetulus griseus proteins.

订购热线: 4008-898-798

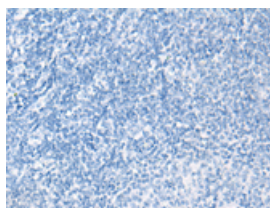
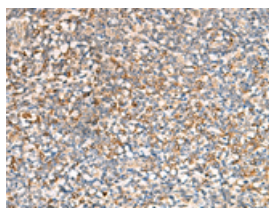
Applications

Immunohistochemistry

Predicted cell location: Cell membrane

Positive control: Human tonsil

Recommended dilution: 50-300

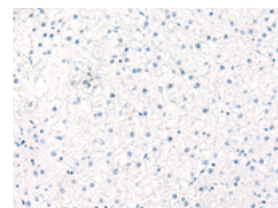
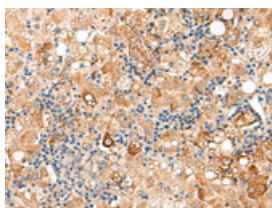


The image on the left is immunohistochemistry of paraffin-embedded Human tonsil tissue using ml125656(SEC22B Antibody) at dilution 1/70, on the right is treated with fusion protein. (Original magnification: ×200)

Predicted cell location: Cell membrane

Positive control: Human liver cancer

Recommended dilution: 50-300



The image on the left is immunohistochemistry of paraffin-embedded Human liver cancer tissue using ml125656(SEC22B Antibody) at dilution 1/70, on the right is treated with fusion protein. (Original magnification: ×200)

Western blotting

Predicted band size: 25 kDa

Positive control: 231, HeLa, LOVO and A172 cell lysates

Recommended dilution: 500-2000

Gel: 12%SDS-PAGE

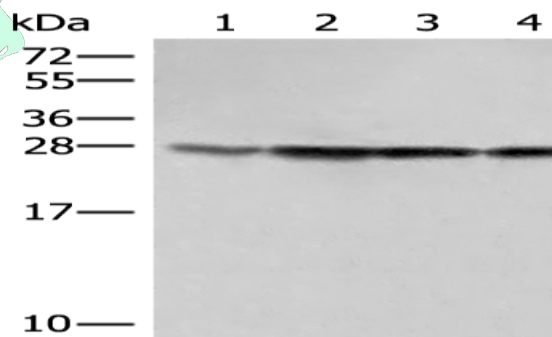
Lysate: 40 μg

Lane 1-4: 231, HeLa, LOVO and A172 cell lysates

Primary antibody: ml125656(SEC22B Antibody) at dilution 1/500

Secondary antibody: Goat anti rabbit IgG at 1/8000 dilution

Exposure time: 10 seconds



ELISA

Recommended dilution: 5000-10000

联系电话: 4008-898-798, 021-61725725

联系QQ: 2881505695, 2881505696

邮箱: mlbio_cn@yeah.net

网址: www.mlbio.cn