

Anti-THNSL1 antibody

Cat. No.	ml125667
Package	25 µl/100 µl/200 µl
Storage	-20°C, pH7.4 PBS, 0.05% NaN ₃ , 40% Glycerol

Product overview

Description	Anti-THNSL1 rabbit polyclonal antibody
Applications	ELISA, WB, IHC
Immunogen	Fusion protein of human THNSL1
Reactivity	Human, Mouse
Content	1.26 mg/ml
Host species	Rabbit
Ig class	Immunogen-specific rabbit IgG
Purification	Antigen affinity purification

Target information

Symbol	THNSL1
Full name	threonine synthase like 1
Synonyms	TSH1
Swissprot	Q8IYQ7

Target Background

THNSL1 (threonine synthase-like 1), also known as TSH1, is a 743 amino acid member of the serine/threonine dehydratase family. Expressed primarily in brain and endocrine glands, THNSL1 is thought to function as a pyridoxal-5'-phosphate (PLP)-dependent enzyme that uses pyridoxal phosphate as a cofactor. THNSL1 shares similarity with bacterial threonine synthases (which synthesize threonine from aspartic acid), suggesting that THNSL1 may have once participated in de novo threonine synthesis within the body, but has since lost its original metabolic role.

订购热线: 4008-898-798

Applications

Immunohistochemistry

Predicted cell location: Cytoplasm or Nucleus

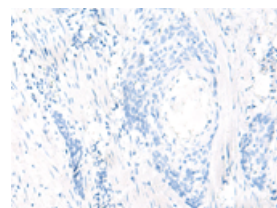
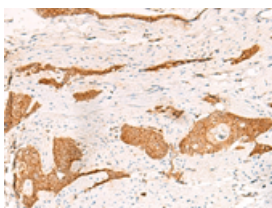
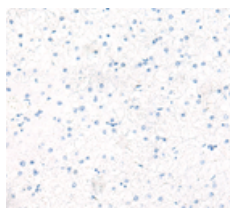
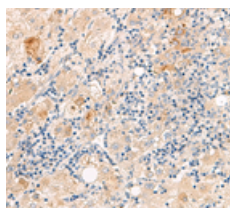
Positive control: Human liver cancer

Recommended dilution: 50-300

Predicted cell location: Cytoplasm or Nucleus

Positive control: Human esophagus cancer

Recommended dilution: 50-300



The image on the left is immunohistochemistry of paraffin-embedded Human liver cancer tissue using ml125667(THNSL1 Antibody) at dilution 1/70, on the right is treated with fusion protein. (Original magnification: $\times 200$)

The image on the left is immunohistochemistry of paraffin-embedded Human esophagus cancer tissue using ml125667(THNSL1 Antibody) at dilution 1/70, on the right is treated with fusion protein. (Original magnification: $\times 200$)

Western blotting

Predicted band size: 83 kDa

Positive control: 231, K562, TM4 cell, Mouse kidney tissue, Mouse liver tissue, Mouse brain tissue, Hela cell lysates

Recommended dilution: 500-2000

Gel: 8%SDS-PAGE

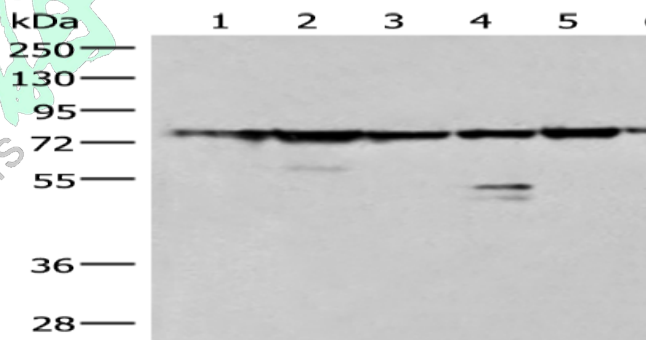
Lysate: 40 μ g

Lane 1-7: 231, K562, TM4 cell, Mouse kidney tissue, Mouse liver tissue, Mouse brain tissue, Hela cell lysates

Primary antibody: ml125667(THNSL1 Antibody) at dilution 1/500

Secondary antibody: Goat anti rabbit IgG at 1/8000 dilution

Exposure time: 1 minute



ELISA

Recommended dilution: 5000-10000

联系电话: 4008-898-798, 021-61725725

联系QQ: 2881505695, 2881505696

邮箱: mlbio_cn@yeah.net

网址: www.mlbio.cn