

Anti-TRPM6 antibody

Cat. No.	ml162419
Package	25 µl/100 µl/200 µl
Storage	-20°C, pH7.4 PBS, 0.05% NaN ₃ , 40% Glycerol

Product overview

Description	Anti-TRPM6 rabbit polyclonal antibody
Applications	ELISA, WB
Immunogen	Synthetic peptide of human TRPM6
Reactivity	Human
Content	0.4 mg/ml
Host species	Rabbit
Ig class	Immunogen-specific rabbit IgG
Purification	Antigen affinity purification

Target information

Symbol	TRPM6
Full name	transient receptor potential cation channel, subfamily M, member 6
Synonyms	HSH; HMGX; HOMG; CHAK2; HOMG1
Swissprot	Q9BX84

Target Background

This gene is predominantly expressed in the kidney and colon, and encodes a protein containing an ion channel domain and a protein kinase domain. It is crucial for magnesium homeostasis, and plays an essential role in epithelial magnesium transport and in the active magnesium absorption in the gut and kidney. Mutations in this gene are associated with hypomagnesemia with secondary hypocalcemia. Alternatively spliced transcript variants encoding different isoforms have been noted for this gene.

订购热线: 4008-898-798

Applications

Western blotting

Predicted band size: 232 kDa

Positive control: Human jejunioleum and ileum tissue

Recommended dilution: 200-1000

Gel: 6%SDS-PAGE

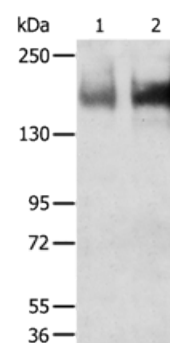
Lysate: 40 µg

Lane 1-2: Human jejunioleum tissue, Human ileum tissue

Primary antibody: ml162419 (TRPM6 Antibody) at dilution 1/200

Secondary antibody: Goat anti rabbit IgG at 1/8000 dilution

Exposure time: 5 minutes



ELISA

Recommended dilution: 1000-2000

联系电话: 4008-898-798, 021-61725725

联系QQ: 2881505695, 2881505696

邮箱: mlbio_cn@yeah.net

网址: www.mlbio.cn