

Anti-HCCS antibody

Cat. No.	ml125696
Package	25 µl/100 µl/200 µl
Storage	-20°C, pH7.4 PBS, 0.05% NaN ₃ , 40% Glycerol

Product overview

Description	Anti-HCCS rabbit polyclonal antibody
Applications	ELISA, WB, IHC
Immunogen	Fusion protein of human HCCS
Reactivity	Human, Mouse
Content	1.02 mg/ml
Host species	Rabbit
Ig class	Immunogen-specific rabbit IgG
Purification	Antigen affinity purification

Target information

Symbol	HCCS
Full name	holocytochrome c synthase
Synonyms	MLS; CCHL; MCOPS7; LSDMCA1
Swissprot	P53701

Target Background

The protein encoded by this gene is an enzyme that covalently links a heme group to the apoprotein of cytochrome c. Defects in this gene are a cause of microphthalmia syndromic type 7 (MCOPS7). Three transcript variants encoding the same protein have been found for this gene.

订购热线: 4008-898-798

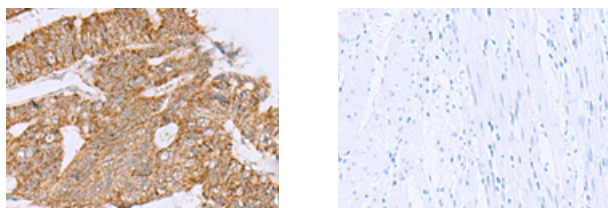
Applications

Immunohistochemistry

Predicted cell location: Cytoplasm

Positive control: Human colorectal cancer

Recommended dilution: 50-300



The image on the left is immunohistochemistry of paraffin-embedded Human colorectal cancer tissue using ml125696(HCCS Antibody) at dilution 1/60, on the right is treated with fusion protein. (Original magnification: $\times 200$)

Western blotting

Predicted band size: 31 kDa

Positive control: HepG2 cell, Mouse heart tissue lysates

Recommended dilution: 5000-10000

Gel: 8%SDS-PAGE

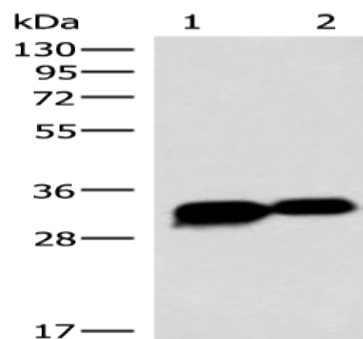
Lysate: 40 μ g

Lane 1-2: HepG2 cell, Mouse heart tissue lysates

Primary antibody: ml125696(HCCS Antibody) at dilution 1/4000

Secondary antibody: Goat anti rabbit IgG at 1/5000 dilution

Exposure time: 3 seconds



ELISA

Recommended dilution: 5000-10000

联系电话: 4008-898-798, 021-61725725

联系QQ: 2881505695, 2881505696

邮箱: mlbio_cn@yeah.net

网址: www.mlbio.cn