

Anti-POLR3F antibody

Cat. No.	ml125726
Package	25 µl/100 µl/200 µl
Storage	-20°C, pH7.4 PBS, 0.05% NaN ₃ , 40% Glycerol

Product overview

Description	Anti-POLR3F rabbit polyclonal antibody
Applications	ELISA, WB, IHC
Immunogen	Fusion protein of human POLR3F
Reactivity	Human, Mouse, Rat
Content	0.84 mg/ml
Host species	Rabbit
Ig class	Immunogen-specific rabbit IgG
Purification	Antigen affinity purification

Target information

Symbol	POLR3F
Full name	RNA polymerase III subunit F
Synonyms	RPC6; RPC39
Swissprot	Q9H1D9

Target Background

The protein encoded by this gene is one of more than a dozen subunits forming eukaryotic RNA polymerase III (RNA Pol III), which transcribes 5S ribosomal RNA and tRNA genes. This protein has been shown to bind both TFIIIB90 and TBP, two subunits of RNA polymerase III transcription initiation factor IIIB (TFIIIB). Unlike most of the other RNA Pol III subunits, the encoded protein is unique to this polymerase. Alternative splicing results in multiple transcript variants.

订购热线: 4008-898-798

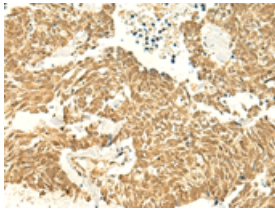
Applications

Immunohistochemistry

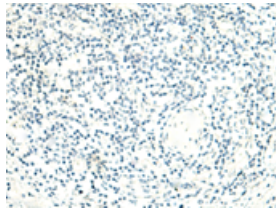
Predicted cell location: Nucleus or Cytoplasm

Positive control: Human lung cancer

Recommended dilution: 50-300



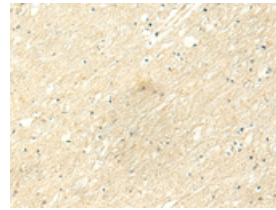
The image on the left is immunohistochemistry of paraffin-embedded Human lung cancer tissue using ml125726 (POLR3F Antibody) at dilution 1/50, on the right is treated with fusion protein. (Original magnification: $\times 200$)



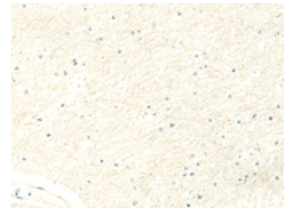
Predicted cell location: Nucleus or Cytoplasm

Positive control: Human brain

Recommended dilution: 50-300



The image on the left is immunohistochemistry of paraffin-embedded Human brain tissue using ml125726 (POLR3F Antibody) at dilution 1/50, on the right is treated with fusion protein. (Original magnification: $\times 200$)



Western blotting

Predicted band size: 36 kDa

Positive control: HepG2, Hela and PC-3 cell lysates

Recommended dilution: 500-2000

Gel: 8% SDS-PAGE

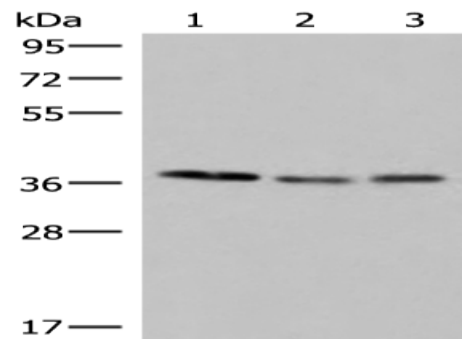
Lysate: 40 μ g

Lane 1-3: HepG2, Hela and PC-3 cell lysates

Primary antibody: ml125726 (POLR3F Antibody) at dilution 1/350

Secondary antibody: Goat anti rabbit IgG at 1/8000 dilution

Exposure time: 25 seconds



ELISA

Recommended dilution: 5000-10000

联系电话: 4008-898-798, 021-61725725

联系QQ: 2881505695, 2881505696

邮箱: mlbio_cn@yeah.net

网址: www.mlbio.cn