

## Anti-MSI1 antibody

<b>Cat. No.</b>	ml162453
<b>Package</b>	25 µl/100 µl/200 µl
<b>Storage</b>	-20°C, pH7.4 PBS, 0.05% NaN <sub>3</sub> , 40% Glycerol

### Product overview

<b>Description</b>	Anti-MSI1 rabbit polyclonal antibody
<b>Applications</b>	ELISA, WB, IHC
<b>Immunogen</b>	Synthetic peptide of human MSI1
<b>Reactivity</b>	Human, Mouse, Rat
<b>Content</b>	0.3 mg/ml
<b>Host species</b>	Rabbit
<b>Ig class</b>	Immunogen-specific rabbit IgG
<b>Purification</b>	Antigen affinity purification

### Target information

<b>Symbol</b>	MSI1
<b>Full name</b>	musashi RNA-binding protein 1
<b>Synonyms</b>	
<b>Swissprot</b>	O43347

### Target Background

This gene encodes a protein containing two conserved tandem RNA recognition motifs. Similar proteins in other species function as RNA-binding proteins and play central roles in posttranscriptional gene regulation. Expression of this gene has been correlated with the grade of the malignancy and proliferative activity in gliomas and melanomas. A pseudogene for this gene is located on chromosome 11q13.

订购热线: 4008-898-798

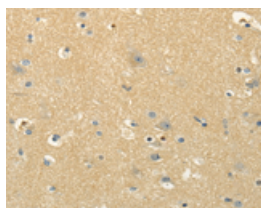
## Applications

### Immunohistochemistry

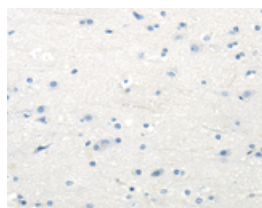
Predicted cell location: Cytoplasm

Positive control: Human brain

Recommended dilution: 25-100



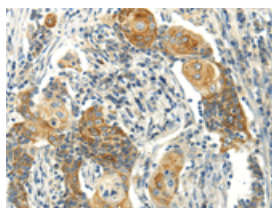
The image on the left is immunohistochemistry of paraffin-embedded Human brain tissue using ml162453(MSI1 Antibody) at dilution 1/30, on the right is treated with synthetic peptide. (Original magnification:  $\times 200$ )



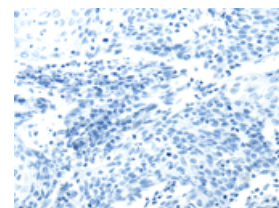
Predicted cell location: Cytoplasm

Positive control: Human cervical cancer

Recommended dilution: 25-100



The image on the left is immunohistochemistry of paraffin-embedded Human cervical cancer tissue using ml162453(MSI1 Antibody) at dilution 1/30, on the right is treated with synthetic peptide. (Original magnification:  $\times 200$ )



### Western blotting

Predicted band size: 39 kDa

Positive control: Mouse brain tissue

Recommended dilution: 500-2000

Gel: 12%SDS-PAGE

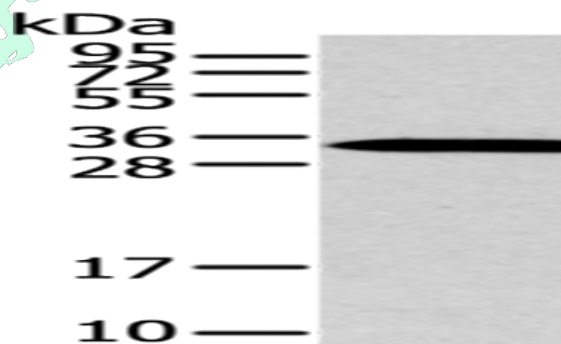
Lysate: 40  $\mu$ g

Lane: Mouse brain tissue

Primary antibody: ml162453(MSI1 Antibody) at dilution 1/200

Secondary antibody: Goat anti rabbit IgG at 1/8000 dilution

Exposure time: 5 minutes



### ELISA

Recommended dilution: 2000-5000

联系电话: 4008-898-798, 021-61725725

联系QQ: 2881505695, 2881505696

邮箱: [mlbio\\_cn@yeah.net](mailto:mlbio_cn@yeah.net)

网址: [www.mlbio.cn](http://www.mlbio.cn)