

## Anti-ZFYVE27 antibody

<b>Cat. No.</b>	ml125768
<b>Package</b>	25 µl/100 µl/200 µl
<b>Storage</b>	-20°C, pH7.4 PBS, 0.05% NaN <sub>3</sub> , 40% Glycerol

### Product overview

<b>Description</b>	Anti-ZFYVE27 rabbit polyclonal antibody
<b>Applications</b>	ELISA, WB, IHC
<b>Immunogen</b>	Fusion protein of human ZFYVE27
<b>Reactivity</b>	Human, Mouse, Rat
<b>Content</b>	0.9 mg/ml
<b>Host species</b>	Rabbit
<b>Ig class</b>	Immunogen-specific rabbit IgG
<b>Purification</b>	Antigen affinity purification

### Target information

<b>Symbol</b>	ZFYVE27
<b>Full name</b>	zinc finger FYVE-type containing 27
<b>Synonyms</b>	SPG33; PROTRUDIN
<b>Swissprot</b>	Q5T4F4

### Target Background

This gene encodes a protein with several transmembrane domains, a Rab11-binding domain and a lipid-binding FYVE finger domain. The encoded protein appears to promote neurite formation. A mutation in this gene has been reported to be associated with hereditary spastic paraplegia, however the pathogenicity of the mutation, which may simply represent a polymorphism, is unclear.

订购热线: 4008-898-798

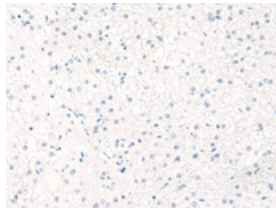
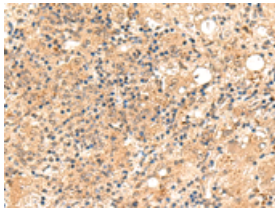
## Applications

### Immunohistochemistry

Predicted cell location: Cytoplasm and Nucleus

Positive control: Human esophagus cancer

Recommended dilution: 50-300

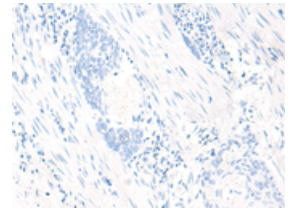
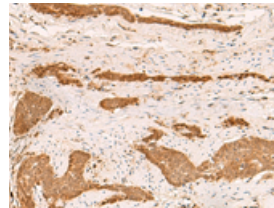


The image on the left is immunohistochemistry of paraffin-embedded Human esophagus cancer tissue using ml125768(ZFYVE27 Antibody) at dilution 1/50, on the right is treated with fusion protein. (Original magnification:  $\times 200$ )

Predicted cell location: Cytoplasm and Nucleus

Positive control: Human liver cancer

Recommended dilution: 50-300



The image on the left is immunohistochemistry of paraffin-embedded Human liver cancer tissue using ml125768(ZFYVE27 Antibody) at dilution 1/50, on the right is treated with fusion protein. (Original magnification:  $\times 200$ )

### Western blotting

Predicted band size: 46 kDa

Positive control: PC3 and Hela cell lysates

Recommended dilution: 500-2000

Gel: 8%SDS-PAGE

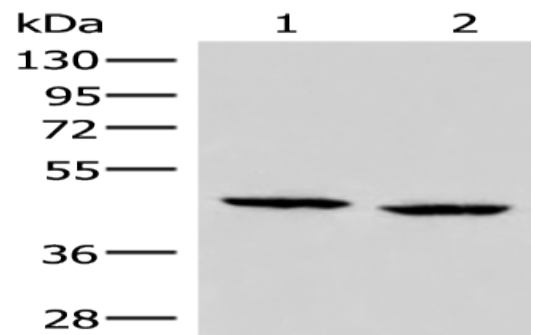
Lysate: 40  $\mu$ g

Lane 1-2: PC3 and Hela cell lysates

Primary antibody: ml125768(ZFYVE27 Antibody) at dilution 1/350

Secondary antibody: Goat anti rabbit IgG at 1/5000 dilution

Exposure time: 20 seconds



### ELISA

Recommended dilution: 5000-10000

联系电话: 4008-898-798, 021-61725725

联系QQ: 2881505695, 2881505696

邮箱: [mlbio\\_cn@yeah.net](mailto:mlbio_cn@yeah.net)

网址: [www.mlbio.cn](http://www.mlbio.cn)