

## Anti-VPS26A antibody

<b>Cat. No.</b>	ml162484
<b>Package</b>	25 µl/100 µl/200 µl
<b>Storage</b>	-20°C, pH7.4 PBS, 0.05% NaN <sub>3</sub> , 40% Glycerol

### Product overview

<b>Description</b>	Anti-VPS26A rabbit polyclonal antibody
<b>Applications</b>	ELISA, WB, IHC
<b>Immunogen</b>	Synthetic peptide of human VPS26A
<b>Reactivity</b>	Human, Mouse, Rat
<b>Content</b>	0.5 mg/ml
<b>Host species</b>	Rabbit
<b>Ig class</b>	Immunogen-specific rabbit IgG
<b>Purification</b>	Antigen affinity purification

### Target information

<b>Symbol</b>	VPS26A
<b>Full name</b>	vacuolar protein sorting 26 homolog A (S. pombe)
<b>Synonyms</b>	HB58; PEP8A; VPS26; Hbeta58
<b>Swissprot</b>	O75436

### Target Background

This gene belongs to a group of vacuolar protein sorting (VPS) genes. The encoded protein is a component of a large multimeric complex, termed the retromer complex, involved in retrograde transport of proteins from endosomes to the trans-Golgi network. The close structural similarity between the yeast and human proteins that make up this complex suggests a similarity in function. Expression studies in yeast and mammalian cells indicate that this protein interacts directly with VPS35, which serves as the core of the retromer complex. Alternative splicing results in multiple transcript variants encoding different isoforms.

订购热线: 4008-898-798

## Applications

### Immunohistochemistry

Predicted cell location: Cytoplasm

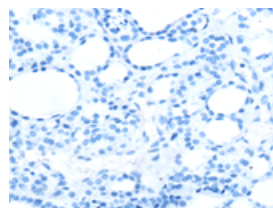
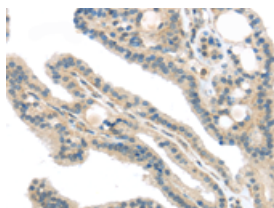
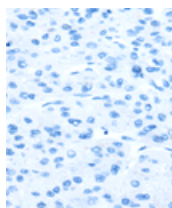
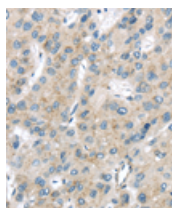
Positive control: Human liver cancer

Recommended dilution: 30-150

Predicted cell location: Cytoplasm

Positive control: Human thyroid cancer

Recommended dilution: 30-150



The image on the left is immunohistochemistry of paraffin-embedded Human liver cancer tissue using ml162484(VPS26A Antibody) at dilution 1/40, on the right is treated with synthetic peptide. (Original magnification:  $\times 200$ )

The image on the left is immunohistochemistry of paraffin-embedded Human thyroid cancer tissue using ml162484(VPS26A Antibody) at dilution 1/40, on the right is treated with synthetic peptide. (Original magnification:  $\times 200$ )

### Western blotting

Predicted band size: 38 kDa

Positive control: 293T, A431, Hela and HepG2 cells, Human fetal liver tissue, PC3 cells and Human placenta tissue

Recommended dilution: 500-2000

Gel: 12%SDS-PAGE

Lysate: 40  $\mu$ g

Lane 1-7: 293T cells, A431 cells, Hela cells,

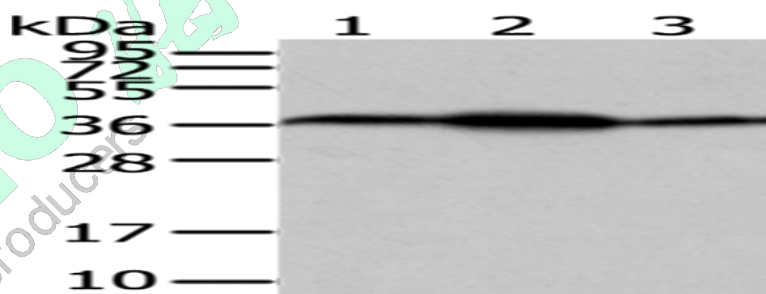
HepG2 cells, Human fetal liver tissue, PC3 cells,

Human placenta tissue

Primary antibody: ml162484(VPS26A Antibody) at dilution 1/200

Secondary antibody: Goat anti rabbit IgG at 1/8000 dilution

Exposure time: 40 seconds



### ELISA

Recommended dilution: 2000-5000

联系电话: 4008-898-798, 021-61725725

联系QQ: 2881505695, 2881505696

邮箱: mlbio\_cn@yeah.net



订购热线: 4008-898-798

网址: [www.mlbio.cn](http://www.mlbio.cn)