

Anti-FYN antibody

Cat. No.	ml162504
Package	25 µl/100 µl/200 µl
Storage	-20°C, pH7.4 PBS, 0.05% NaN ₃ , 40% Glycerol

Product overview

Description	Anti-FYN rabbit polyclonal antibody
Applications	ELISA, WB
Immunogen	Synthetic peptide of human FYN
Reactivity	Human, Mouse, Rat
Content	0.2 mg/ml
Host species	Rabbit
Ig class	Immunogen-specific rabbit IgG
Purification	Antigen affinity purification

Target information

Symbol	FYN
Full name	FYN proto-oncogene, Src family tyrosine kinase
Synonyms	SLK; SYN; p59-FYN
Swissprot	P06241

Target Background

This gene is a member of the protein-tyrosine kinase oncogene family. It encodes a membrane-associated tyrosine kinase that has been implicated in the control of cell growth. The protein associates with the p85 subunit of phosphatidylinositol 3-kinase and interacts with the fyn-binding protein. Alternatively spliced transcript variants encoding distinct isoforms exist.

订购热线: 4008-898-798

Applications

Western blotting

Predicted band size: 61 kDa

Positive control: HeLa, K562 and NIH/3T3 cell

Recommended dilution: 500-2000

Gel: 8%SDS-PAGE

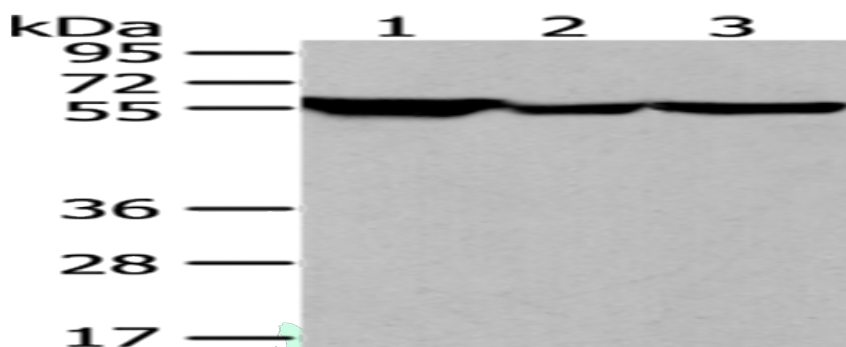
Lysate: 40 µg

Lane 1-3: HeLa, K562 and NIH/3T3 cell

Primary antibody: ml162504(FYN Antibody) at dilution 1/200

Secondary antibody: Goat anti rabbit IgG at 1/8000 dilution

Exposure time: 30 seconds



ELISA

Recommended dilution: 2000-5000

联系电话: 4008-898-798, 021-61725725

联系QQ: 2881505695, 2881505696

邮箱: mlbio_cn@yeah.net

网址: www.mlbio.cn