

## Anti-WNK3 antibody

<b>Cat. No.</b>	ml162601
<b>Package</b>	25 µl/100 µl/200 µl
<b>Storage</b>	-20°C, pH7.4 PBS, 0.05% NaN <sub>3</sub> , 40% Glycerol

### Product overview

<b>Description</b>	Anti-WNK3 rabbit polyclonal antibody
<b>Applications</b>	ELISA, WB, IHC
<b>Immunogen</b>	Synthetic peptide of human WNK3
<b>Reactivity</b>	Human, Mouse
<b>Content</b>	0.2 mg/ml
<b>Host species</b>	Rabbit
<b>Ig class</b>	Immunogen-specific rabbit IgG
<b>Purification</b>	Antigen affinity purification

### Target information

<b>Symbol</b>	WNK3
<b>Full name</b>	WNK lysine deficient protein kinase 3
<b>Synonyms</b>	PRKWNK3
<b>Swissprot</b>	Q9BYP7

### Target Background

This gene encodes a protein belonging to the 'with no lysine' family of serine-threonine protein kinases. These family members lack the catalytic lysine in subdomain II, and instead have a conserved lysine in subdomain I. This family member functions as a positive regulator of the transcellular Ca<sup>2+</sup> transport pathway, and it plays a role in the increase of cell survival in a caspase-3-dependent pathway. Alternative splicing results in multiple transcript variants.

订购热线: 4008-898-798

## Applications

### Immunohistochemistry

Predicted cell location: Cytoplasm

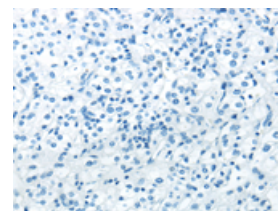
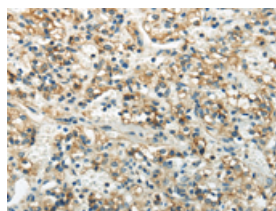
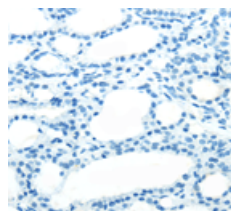
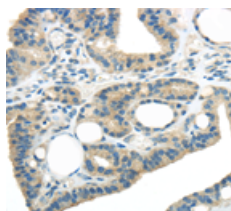
Positive control: Human thyroid cancer

Recommended dilution: 10-50

Predicted cell location: Cytoplasm

Positive control: Human prostate cancer

Recommended dilution: 10-50



The image on the left is immunohistochemistry of paraffin-embedded Human thyroid cancer tissue using ml162601(WNK3 Antibody) at dilution 1/20, on the right is treated with synthetic peptide. (Original magnification:  $\times 200$ )

The image on the left is immunohistochemistry of paraffin-embedded Human prostate cancer tissue using ml162601(WNK3 Antibody) at dilution 1/20, on the right is treated with synthetic peptide. (Original magnification:  $\times 200$ )

### Western blotting

Predicted band size: 198 kDa

Positive control: MCF7 and 293T cells

Recommended dilution: 200-1000

Gel: 6% SDS-PAGE

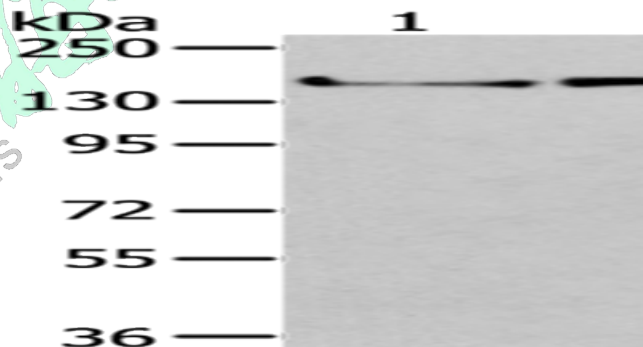
Lysate: 40  $\mu$ g

Lane 1-2: MCF7 cells, 293T cells

Primary antibody: ml162601(WNK3 Antibody) at dilution 1/200

Secondary antibody: Goat anti rabbit IgG at 1/8000 dilution

Exposure time: 3 minutes



### ELISA

Recommended dilution: 1000-2000

联系电话: 4008-898-798, 021-61725725

联系QQ: 2881505695, 2881505696

邮箱: [mlbio\\_cn@yeah.net](mailto:mlbio_cn@yeah.net)

网址: [www.mlbio.cn](http://www.mlbio.cn)