

Anti-PDPN antibody

Cat. No.	ml162603
Package	25 µl/100 µl/200 µl
Storage	-20°C, pH7.4 PBS, 0.05% NaN ₃ , 40% Glycerol

Product overview

Description	Anti-PDPN rabbit polyclonal antibody
Applications	ELISA, WB, IHC
Immunogen	Synthetic peptide of human PDPN
Reactivity	Human
Content	0.3 mg/ml
Host species	Rabbit
Ig class	Immunogen-specific rabbit IgG
Purification	Antigen affinity purification

Target information

Symbol	PDPN
Full name	podoplanin
Synonyms	T1A; GP36; GP40; Gp38; OTS8; T1A2; T1A; T1A-2; AGGRUS; HT1A-1; PA2.26
Swissprot	Q86YL7

Target Background

This gene encodes a type-I integral membrane glycoprotein with diverse distribution in human tissues. The physiological function of this protein may be related to its mucin-type character. The homologous protein in other species has been described as a differentiation antigen and influenza-virus receptor. The specific function of this protein has not been determined but it has been proposed as a marker of lung injury. Alternatively spliced transcript variants encoding different isoforms have been identified.

订购热线: 4008-898-798

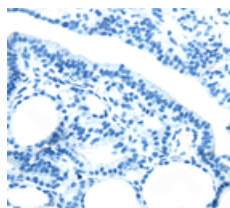
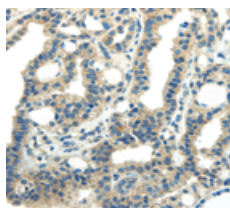
Applications

Immunohistochemistry

Predicted cell location: Cell membrane

Positive control: Human thyroid cancer

Recommended dilution: 10-50

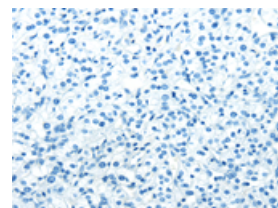
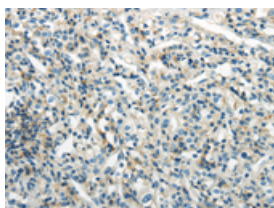


The image on the left is immunohistochemistry of paraffin-embedded Human thyroid cancer tissue using ml162603(PDPN Antibody) at dilution 1/25, on the right is treated with synthetic peptide. (Original magnification: $\times 200$)

Predicted cell location: Cell membrane

Positive control: Human prostate cancer

Recommended dilution: 10-50



The image on the left is immunohistochemistry of paraffin-embedded Human prostate cancer tissue using ml162603(PDPN Antibody) at dilution 1/25, on the right is treated with synthetic peptide. (Original magnification: $\times 200$)

Western blotting

Predicted band size: 17 kDa; 25 kDa

Positive control: 293T and Hela cells

Recommended dilution: 500-2000

Gel: 12% SDS-PAGE

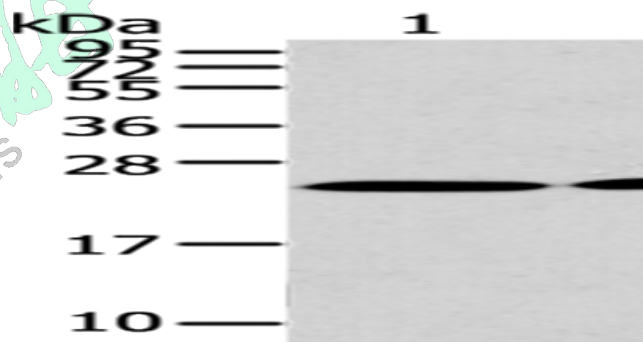
Lysate: 40 μ g

Lane 1-2: 293T cells, Hela cells

Primary antibody: ml162603(PDPN Antibody) at dilution 1/200

Secondary antibody: Goat anti rabbit IgG at 1/8000 dilution

Exposure time: 2 minutes



ELISA

Recommended dilution: 2000-5000

联系电话: 4008-898-798, 021-61725725

联系QQ: 2881505695, 2881505696

邮箱: mlbio_cn@yeah.net

网址: www.mlbio.cn