

Anti-PEPD antibody

Cat. No.	ml125914
Package	25 µl/100 µl/200 µl
Storage	-20°C, pH7.4 PBS, 0.05% NaN ₃ , 40% Glycerol

Product overview

Description	Anti-PEPD rabbit polyclonal antibody
Applications	ELISA, WB, IHC
Immunogen	Fusion protein of human PEPD
Reactivity	Human, Mouse, Rat
Content	1.5 mg/ml
Host species	Rabbit
Ig class	Immunogen-specific rabbit IgG
Purification	Antigen affinity purification

Target information

Symbol	PEPD
Full name	peptidase D
Synonyms	PROLIDASE
Swissprot	P12955

Target Background

This gene encodes a member of the peptidase family. The protein forms a homodimer that hydrolyzes dipeptides or tripeptides with C-terminal proline or hydroxyproline residues. The enzyme serves an important role in the recycling of proline, and may be rate limiting for the production of collagen. Mutations in this gene result in prolidase deficiency, which is characterized by the excretion of large amount of di- and tri-peptides containing proline. Multiple transcript variants encoding different isoforms have been found for this gene.

订购热线: 4008-898-798

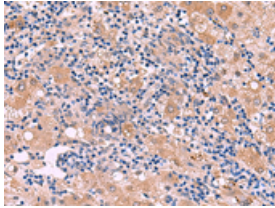
Applications

Immunohistochemistry

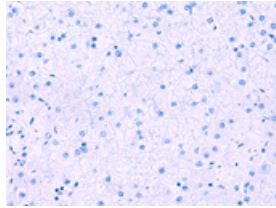
Predicted cell location: Cytoplasm

Positive control: Human liver cancer

Recommended dilution: 50-300



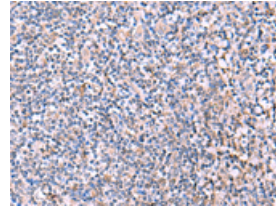
The image on the left is immunohistochemistry of paraffin-embedded Human liver cancer tissue using ml125914(PEPD Antibody) at dilution 1/85, on the right is treated with fusion protein. (Original magnification: $\times 200$)



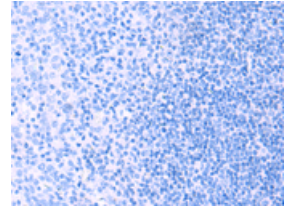
Predicted cell location: Cytoplasm

Positive control: Human tonsil

Recommended dilution: 50-300



The image on the left is immunohistochemistry of paraffin-embedded Human tonsil tissue using ml125914(PEPD Antibody) at dilution 1/85, on the right is treated with fusion protein. (Original magnification: $\times 200$)



Western blotting

Predicted band size: 55 kDa

Positive control: HepG2 cell, Mouse small intestines tissue lysates

Recommended dilution: 1000-5000

Gel: 8%SDS-PAGE

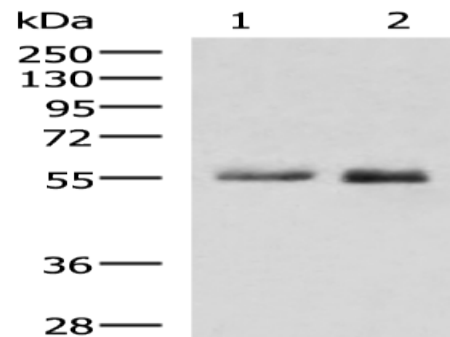
Lysate: 40 μ g

Lane 1-2: HepG2 cell, Mouse small intestines tissue lysates

Primary antibody: ml125914(PEPD Antibody) at dilution 1/1000

Secondary antibody: Goat anti rabbit IgG at 1/5000 dilution

Exposure time: 2 minutes



ELISA

Recommended dilution: 5000-10000

联系电话: 4008-898-798, 021-61725725

联系QQ: 2881505695, 2881505696

邮箱: mlbio_cn@yeah.net

网址: www.mlbio.cn