

Anti-VCP antibody

Cat. No.	ml151110
Package	25 µl/100 µl/200 µl
Storage	-20°C, pH7.4 PBS, 0.05% NaN ₃ , 40% Glycerol

Product overview

Description	Anti-VCP rabbit polyclonal antibody
Applications	ELISA, WB, IHC
Immunogen	Synthetic peptide of human VCP
Reactivity	Human, Mouse, Rat
Content	0.1 mg/ml
Host species	Rabbit
Ig class	Immunogen-specific rabbit IgG
Purification	Antigen affinity purification

Target information

Symbol	VCP
Full name	valosin containing protein
Synonyms	p97, TERA, ALS14, IBMPFD
Swissprot	P55072

Target Background

The protein encoded by this gene is a member of a family that includes putative ATP-binding proteins involved in vesicle transport and fusion, 26S proteasome function, and assembly of peroxisomes. This protein, as a structural protein, is associated with clathrin, and heat-shock protein Hsc70, to form a complex. It has been implicated in a number of cellular events that are regulated during mitosis, including homotypic membrane fusion, spindle pole body function, and ubiquitin-dependent protein degradation.

订购热线: 4008-898-798

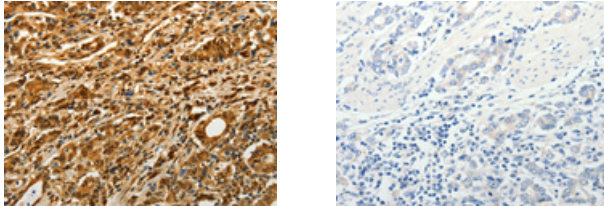
Applications

Immunohistochemistry

Predicted cell location: Cytoplasm

Positive control: Human gastric cancer

Recommended dilution: 25-100



The image on the left is immunohistochemistry of paraffin-embedded Human gastric cancer tissue using ml151110(VCP Antibody) at dilution 1/13, on the right is treated with synthetic peptide. (Original magnification: ×200)

Western blotting

Predicted band size: 90 kDa

Positive control: A549 cells

Recommended dilution: 500-2000

Gel: 8%SDS-PAGE

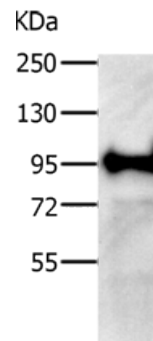
Lysate: 40 µg

Lane: A549 cells

Primary antibody: ml151110(VCP Antibody) at dilution 1/300

Secondary antibody: Goat anti rabbit IgG at 1/8000 dilution

Exposure time: 5 seconds



ELISA

Recommended dilution: 2000-20000

联系电话: 4008-898-798, 021-61725725

联系QQ: 2881505695, 2881505696

邮箱: mlbio_cn@yeah.net

网址: www.mlbio.cn