

Anti-VSNL1 antibody

Cat. No.	ml151138
Package	25 µl/100 µl/200 µl
Storage	-20°C, pH7.4 PBS, 0.05% NaN ₃ , 40% Glycerol

Product overview

Description	Anti-VSNL1 rabbit polyclonal antibody
Applications	ELISA, WB, IHC
Immunogen	Synthetic peptide of human VSNL1
Reactivity	Human, Mouse, Rat
Content	0.4 mg/ml
Host species	Rabbit
Ig class	Immunogen-specific rabbit IgG
Purification	Antigen affinity purification

Target information

Symbol	VSNL1
Full name	visinin-like 1
Synonyms	HLP3, VILIP, HPCAL3, HUVISL1, VILIP-1
Swissprot	P62760

Target Background

This gene is a member of the visinin/recoverin subfamily of neuronal calcium sensor proteins. The encoded protein is strongly expressed in granule cells of the cerebellum where it associates with membranes in a calcium-dependent manner and modulates intracellular signaling pathways of the central nervous system by directly or indirectly regulating the activity of adenyl cyclase. Alternatively spliced transcript variants have been observed, but their full-length nature has not been determined.

订购热线: 4008-898-798

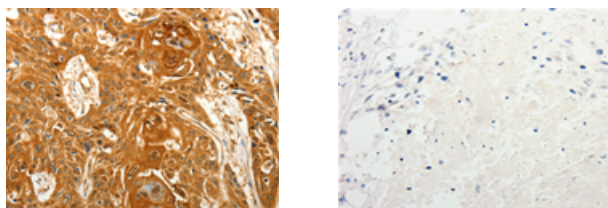
Applications

Immunohistochemistry

Predicted cell location: Cytoplasm

Positive control: Human esophagus cancer

Recommended dilution: 50-200



The image on the left is immunohistochemistry of paraffin-embedded Human esophagus cancer tissue using ml151138(VSNL1 Antibody) at dilution 1/25, on the right is treated with synthetic peptide. (Original magnification: $\times 200$)

Western blotting

Predicted band size: 22 kDa

Positive control: HeLa cells

Recommended dilution: 1000-3000

Gel: 10% SDS-PAGE

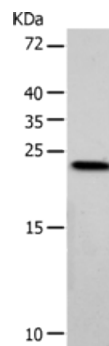
Lysate: 40 μ g

Lane: HeLa cells

Primary antibody: ml151138(VSNL1 Antibody) at dilution 1/900

Secondary antibody: Goat anti rabbit IgG at 1/8000 dilution

Exposure time: 5 seconds



ELISA

Recommended dilution: 2000-20000

联系电话: 4008-898-798, 021-61725725

联系QQ: 2881505695, 2881505696

邮箱: mlbio_cn@yeah.net

网址: www.mlbio.cn