

Anti-VCL antibody

Cat. No.	ml151141
Package	25 µl/100 µl/200 µl
Storage	-20°C, pH7.4 PBS, 0.05% NaN ₃ , 40% Glycerol

Product overview

Description	Anti-VCL rabbit polyclonal antibody
Applications	ELISA, WB, IHC
Immunogen	Synthetic peptide of human VCL
Reactivity	Human, Mouse, Rat
Content	0.6 mg/ml
Host species	Rabbit
Ig class	Immunogen-specific rabbit IgG
Purification	Antigen affinity purification

Target information

Symbol	VCL
Full name	vinculin
Synonyms	MVCL, CMD1W, CMH15
Swissprot	P18206

Target Background

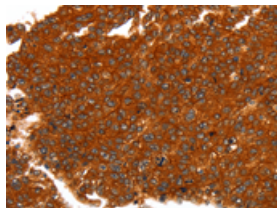
Vinculin is a cytoskeletal protein associated with cell-cell and cell-matrix junctions, where it is thought to function as one of several interacting proteins involved in anchoring F-actin to the membrane. Defects in VCL are the cause of cardiomyopathy dilated type 1W. Dilated cardiomyopathy is a disorder characterized by ventricular dilation and impaired systolic function, resulting in congestive heart failure and arrhythmia. Multiple alternatively spliced transcript variants have been found for this gene, but the biological validity of some variants has not been determined.

订购热线: 4008-898-798

Applications

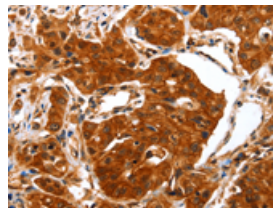
Immunohistochemistry

Predicted cell location: Cytoplasm
Positive control: Human liver cancer
Recommended dilution: 25-100



The image is immunohistochemistry of paraffin-embedded Human liver cancer tissue using ml151141(VCL Antibody) at dilution 1/13. (Original magnification: $\times 200$)

Predicted cell location: Cytoplasm
Positive control: Human lung cancer
Recommended dilution: 25-100



The image is immunohistochemistry of paraffin-embedded Human lung cancer tissue using ml151141(VCL Antibody) at dilution 1/13. (Original magnification: $\times 200$)

Western blotting

Predicted band size: 123 kDa
Positive control: HeLa cells
Recommended dilution: 1000-4000

Gel: 8% SDS-PAGE

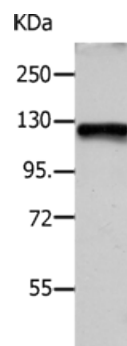
Lysate: 40 μ g

Lane: HeLa cells

Primary antibody: ml151141(VCL Antibody) at dilution 1/1200

Secondary antibody: Goat anti rabbit IgG at 1/8000 dilution

Exposure time: 1 minute



ELISA

Recommended dilution: 5000-240000

联系电话: 4008-898-798, 021-61725725

联系QQ: 2881505695, 2881505696

邮箱: mlbio_cn@yeah.net

网址: www.mlbio.cn