

Anti-SLC18A1 antibody

Cat. No.	ml151148
Package	25 µl/100 µl/200 µl
Storage	-20°C, pH7.4 PBS, 0.05% NaN ₃ , 40% Glycerol

Product overview

Description	Anti-SLC18A1 rabbit polyclonal antibody
Applications	ELISA, WB, IHC
Immunogen	Synthetic peptide of human SLC18A1
Reactivity	Human
Content	0.1 mg/ml
Host species	Rabbit
Ig class	Immunogen-specific rabbit IgG
Purification	Antigen affinity purification

Target information

Symbol	SLC18A1
Full name	solute carrier family 18 (vesicular monoamine), member 1
Synonyms	CGAT, VAT1, VMAT1
Swissprot	P54219

Target Background

The vesicular monoamine transporter acts to accumulate cytosolic monoamines into vesicles, using the proton gradient maintained across the vesicular membrane. Its proper function is essential to the correct activity of the monoaminergic systems that have been implicated in several human neuropsychiatric disorders. The transporter is a site of action of important drugs, including reserpine and tetrabenazine.

订购热线: 4008-898-798

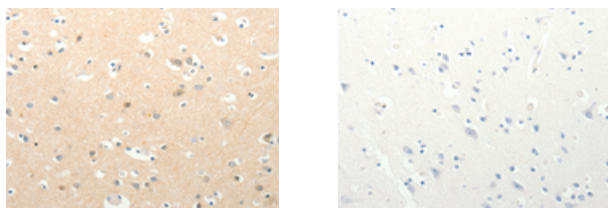
Applications

Immunohistochemistry

Predicted cell location: Cytoplasm

Positive control: Human brain

Recommended dilution: 10-50



The image on the left is immunohistochemistry of paraffin-embedded Human brain tissue using ml151148(SLC18A1 Antibody) at dilution 1/13, on the right is treated with synthetic peptide. (Original magnification: ×200)

Western blotting

Predicted band size: 56 kDa

Positive control: A549 cells

Recommended dilution: 500-2000

Gel: 10%SDS-PAGE

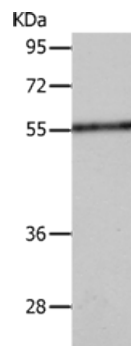
Lysate: 40 µg

Lane: A549 cells

Primary antibody: ml151148(SLC18A1 Antibody) at dilution 1/400

Secondary antibody: Goat anti rabbit IgG at 1/8000 dilution

Exposure time: 45 seconds



ELISA

Recommended dilution: 2000-20000

联系电话: 4008-898-798, 021-61725725

联系QQ: 2881505695, 2881505696

邮箱: mlbio_cn@yeah.net

网址: www.mlbio.cn