

Anti-CLDN15 antibody

Cat. No.	ml162689
Package	25 µl/100 µl/200 µl
Storage	-20°C, pH7.4 PBS, 0.05% NaN ₃ , 40% Glycerol

Product overview

Description	Anti-CLDN15 rabbit polyclonal antibody
Applications	ELISA, WB
Immunogen	Synthetic peptide of human CLDN15
Reactivity	Human
Content	1.2 mg/ml
Host species	Rabbit
Ig class	Immunogen-specific rabbit IgG
Purification	Antigen affinity purification

Target information

Symbol	CLDN15
Full name	claudin 15
Synonyms	
Swissprot	P56746

Target Background

This gene encodes a member of the claudin family. Claudins are integral membrane proteins and components of tight junction strands. Tight junction strands serve as a physical barrier to prevent solutes and water from passing freely through the paracellular space between epithelial or endothelial cell sheets, and also play critical roles in maintaining cell polarity and signal transductions. Alternatively spliced transcript variants encoding the same protein have been found for this gene.

订购热线: 4008-898-798

Applications

Western blotting

Predicted band size: 24 kDa

Positive control: K562, 231 and PC3 cell

Recommended dilution: 200-1000

Gel: 12% SDS-PAGE

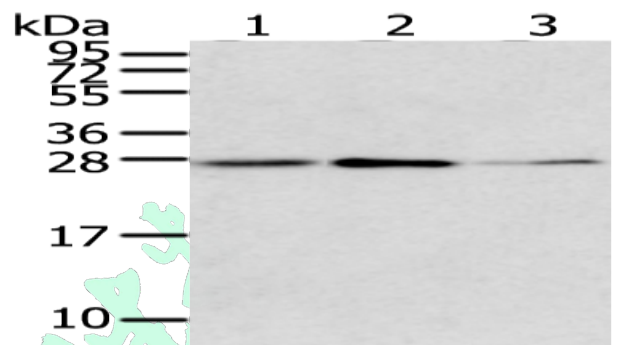
Lysate: 40 µg

Lane 1-3: K562, 231 and PC3 cell

Primary antibody: ml162689 (CLDN15 Antibody) at dilution 1/200

Secondary antibody: Goat anti rabbit IgG at 1/8000 dilution

Exposure time: 1 minute



ELISA

Recommended dilution: 1000-2000

联系电话: 4008-898-798, 021-61725725

联系QQ: 2881505695, 2881505696

邮箱: mlbio_cn@yeah.net

网址: www.mlbio.cn