

Anti-CLEC9A antibody

Cat. No.	ml162720
Package	25 µl/100 µl/200 µl
Storage	-20°C, pH7.4 PBS, 0.05% NaN ₃ , 40% Glycerol

Product overview

Description	Anti-CLEC9A rabbit polyclonal antibody
Applications	ELISA, WB
Immunogen	Synthetic peptide of human CLEC9A
Reactivity	Human
Content	0.96 mg/ml
Host species	Rabbit
Ig class	Immunogen-specific rabbit IgG
Purification	Antigen affinity purification

Target information

Symbol	CLEC9A
Full name	C-type lectin domain containing 9A
Synonyms	CD370; DNGR1; DNGR-1; UNQ9341
Swissprot	Q6UXN8

Target Background

CLEC9A is a group V C-type lectin-like receptor (CTLR) that functions as an activation receptor and is expressed on myeloid lineage cells. Flow cytometric, Western blot, and deglycosylation analyses showed surface expression of a glycosylated CLEC9A dimer of 40 and 45 kD under reducing conditions. The deglycosylated dimer was approximately 30 and 35 kD. RT-PCR detected CLEC9A expression in most human tissues examined, with highest levels in brain, thymus, and spleen.

订购热线: 4008-898-798

Applications

Western blotting

Predicted band size: 27 kDa

Positive control: Human fetal brain tissue lysate

Recommended dilution: 500-2000

Gel: 8%SDS-PAGE

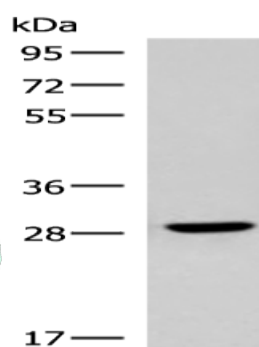
Lysate: 40 µg

Lane: Human fetal brain tissue lysate

Primary antibody: ml162720(CLEC9A Antibody) at dilution 1/800

Secondary antibody: Goat anti rabbit IgG at 1/5000 dilution

Exposure time: 20 seconds



ELISA

Recommended dilution: 5000-10000

联系电话: 4008-898-798, 021-61725725

联系QQ: 2881505695, 2881505696

邮箱: mlbio_cn@yeah.net

网址: www.mlbio.cn