

Anti-UNC5CL antibody

Cat. No.	ml152136
Package	25 µl/100 µl/200 µl
Storage	-20°C, pH7.4 PBS, 0.05% NaN ₃ , 40% Glycerol

Product overview

Description	Anti-UNC5CL rabbit polyclonal antibody
Applications	ELISA, WB, IHC
Immunogen	Synthetic peptide of human UNC5CL
Reactivity	Human, Mouse
Content	1.7 mg/ml
Host species	Rabbit
Ig class	Immunogen-specific rabbit IgG
Purification	Antigen affinity purification

Target information

Symbol	UNC5CL
Full name	unc-5 homolog C (C. elegans)-like
Synonyms	ZUD; MUXA
Swissprot	Q8IV45

Target Background

This protein inhibits NF-kappa-B-dependent transcription by impairing NF-kappa-B binding to its targets. It interacts with p65/RELA and NFKB1. It has high levels expression in pancreas, liver and kidney. It contains one death domain and one ZU5 domain.

订购热线: 4008-898-798

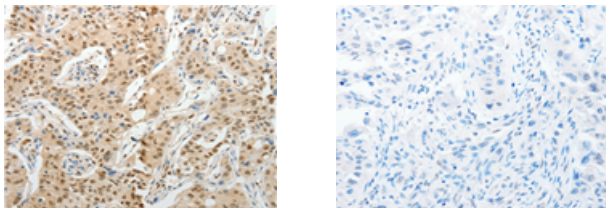
Applications

Immunohistochemistry

Predicted cell location: Cytoplasm, Nucleus

Positive control: Human lung cancer

Recommended dilution: 50-200



The image on the left is immunohistochemistry of paraffin-embedded Human lung cancer tissue using ml152136(UNC5CL Antibody) at dilution 1/50, on the right is treated with synthetic peptide. (Original magnification: $\times 200$)

Western blotting

Predicted band size: 58 kDa

Positive control: Mouse kidney tissue and 293T cells

Recommended dilution: 1000-5000

Gel: 8%SDS-PAGE

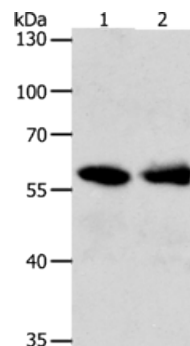
Lysate: 40 μ g

Lane 1-2: Mouse kidney tissue, 293T cells

Primary antibody: ml152136(UNC5CL Antibody) at dilution 1/850

Secondary antibody: Goat anti rabbit IgG at 1/8000 dilution

Exposure time: 10 seconds



ELISA

Recommended dilution: 2000-10000

联系电话: 4008-898-798, 021-61725725

联系QQ: 2881505695, 2881505696

邮箱: mlbio_cn@yeah.net

网址: www.mlbio.cn