

Anti-ZWILCH antibody

Cat. No.	ml152139
Package	25 µl/100 µl/200 µl
Storage	-20°C, pH7.4 PBS, 0.05% NaN ₃ , 40% Glycerol

Product overview

Description	Anti-ZWILCH rabbit polyclonal antibody
Applications	ELISA, WB
Immunogen	Synthetic peptide of human ZWILCH
Reactivity	Human, Mouse
Content	0.6 mg/ml
Host species	Rabbit
Ig class	Immunogen-specific rabbit IgG
Purification	Antigen affinity purification

Target information

Symbol	ZWILCH
Full name	zwilch kinetochore protein
Synonyms	KNTC1AP; hZwilch
Swissprot	Q9H900

Target Background

This protein is essential component of the mitotic checkpoint, which prevents cells from prematurely exiting mitosis. And it is required for the assembly of the dynein-dynactin and MAD1-MAD2 complexes onto kinetochores. ZWILCH gene is deleted in a patient suffering from colorectal cancer with chromosomal instability.

订购热线: 4008-898-798

Applications

Western blotting

Predicted band size: 67 kDa

Positive control: HT-29 and hela cells

Recommended dilution: 1000-5000

Gel: 8%SDS-PAGE

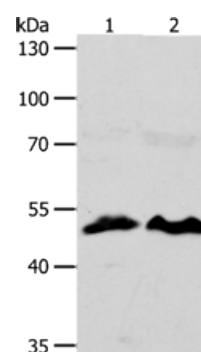
Lysate: 40 µg

Lane 1-2: HT29 cells, hela cells

Primary antibody: ml152139(ZWILCH Antibody) at dilution 1/1750

Secondary antibody: Goat anti rabbit IgG at 1/8000 dilution

Exposure time: 3 seconds



ELISA

Recommended dilution: 2000-10000

联系电话: 4008-898-798, 021-61725725

联系QQ: 2881505695, 2881505696

邮箱: mlbio_cn@yeah.net

网址: www.mlbio.cn