

Anti-YES1 antibody

Cat. No.	ml152150
Package	25 µl/100 µl/200 µl
Storage	-20°C, pH7.4 PBS, 0.05% NaN ₃ , 40% Glycerol

Product overview

Description	Anti-YES1 rabbit polyclonal antibody
Applications	ELISA, WB
Immunogen	Synthetic peptide of human YES1
Reactivity	Human, Mouse, Rat
Content	3.5 mg/ml
Host species	Rabbit
Ig class	Immunogen-specific rabbit IgG
Purification	Antigen affinity purification

Target information

Symbol	YES1
Full name	v-yes-1 Yamaguchi sarcoma viral oncogene homolog 1
Synonyms	Yes; c-yes; HsT441; P61-YES
Swissprot	P07947

Target Background

This gene is the cellular homolog of the Yamaguchi sarcoma virus oncogene. The encoded protein has tyrosine kinase activity and belongs to the src family of proteins. This gene lies in close proximity to thymidylate synthase gene on chromosome 18, and a corresponding pseudogene has been found on chromosome 22.

订购热线: 4008-898-798

Applications

Western blotting

Predicted band size: 61 kDa

Positive control: Lncap cells

Recommended dilution: 1000-5000

Gel: 8%SDS-PAGE

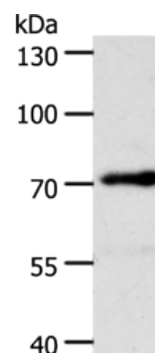
Lysate: 40 µg

Lane: Lncap cells

Primary antibody: ml152150(YES1 Antibody) at dilution 1/1750

Secondary antibody: Goat anti rabbit IgG at 1/8000 dilution

Exposure time: 10 seconds



ELISA

Recommended dilution: 2000-10000

联系电话: 4008-898-798, 021-61725725

联系QQ: 2881505695, 2881505696

邮箱: mlbio_cn@yeah.net

网址: www.mlbio.cn