

## Anti-XPO1 antibody

<b>Cat. No.</b>	ml152185
<b>Package</b>	25 µl/100 µl/200 µl
<b>Storage</b>	-20°C, pH7.4 PBS, 0.05% NaN <sub>3</sub> , 40% Glycerol

### Product overview

<b>Description</b>	Anti-XPO1 rabbit polyclonal antibody
<b>Applications</b>	ELISA, WB
<b>Immunogen</b>	Synthetic peptide of human XPO1
<b>Reactivity</b>	Human, Mouse, Rat
<b>Content</b>	0.79 mg/ml
<b>Host species</b>	Rabbit
<b>Ig class</b>	Immunogen-specific rabbit IgG
<b>Purification</b>	Antigen affinity purification

### Target information

<b>Symbol</b>	XPO1/CRM1
<b>Full name</b>	exportin 1 (CRM1 homolog, yeast)
<b>Synonyms</b>	emb; CRM1; exp1
<b>Swissprot</b>	O14980

### Target Background

The protein encoded by this gene mediates leucine-rich nuclear export signal (NES)-dependent protein transport. Exportin 1 specifically inhibits the nuclear export of Rev and U snRNAs. It is involved in the control of several cellular processes by controlling the localization of cyclin B, MPK, and MAPKAP kinase 2. This protein also regulates NFAT and AP-1.

订购热线: 4008-898-798

#### Applications

##### Western blotting

Predicted band size: 123 kDa

Positive control: Raji and K562 cells

Recommended dilution: 200-1000

Gel: 8%SDS-PAGE

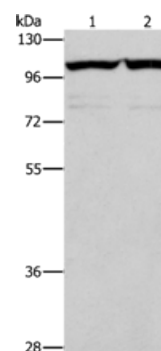
Lysate: 60 µg

Lane 1-2: Raji cells, K562 cells

Primary antibody: ml152185(XPO1 Antibody) at dilution 1/200

Secondary antibody: Goat anti rabbit IgG at 1/8000 dilution

Exposure time: 10 seconds



##### ELISA

Recommended dilution: 1000-2000

联系电话: 4008-898-798, 021-61725725

联系QQ: 2881505695, 2881505696

邮箱: [mlbio\\_cn@yeah.net](mailto:mlbio_cn@yeah.net)

网址: [www.mlbio.cn](http://www.mlbio.cn)