

## Anti-WBP2 antibody

|                 |   |
|-----------------|---|
| <b>Cat. No.</b> | ml152205  |
| <b>Package</b>  | 25 µl/100 µl/200 µl                                     |
| <b>Storage</b>  | -20°C, pH7.4 PBS, 0.05% NaN <sub>3</sub> , 40% Glycerol |

### Product overview

|                     |                                      |
|---------------------|--------------------------------------|
| <b>Description</b>  | Anti-WBP2 rabbit polyclonal antibody |
| <b>Applications</b> | ELISA, WB, IHC                       |
| <b>Immunogen</b>    | Synthetic peptide of human WBP2      |
| <b>Reactivity</b>   | Human, Mouse, Rat                    |
| <b>Content</b>      | 0.687 mg/ml                          |
| <b>Host species</b> | Rabbit                               |
| <b>Ig class</b>     | Immunogen-specific rabbit IgG        |
| <b>Purification</b> | Antigen affinity purification        |

### Target information

|                  |                             |
|------------------|-----------------------------|
| <b>Symbol</b>    | WBP2                        |
| <b>Full name</b> | WW domain binding protein 2 |
| <b>Synonyms</b>  | WBP-2                       |
| <b>Swissprot</b> | Q969T9                      |

### Target Background

The globular WW domain is composed of 38 to 40 semiconserved amino acids shared by proteins of diverse functions including structural, regulatory, and signaling proteins. The domain is involved in mediating protein-protein interactions through the binding of polyproline ligands. This gene encodes a WW domain binding protein, which binds to the WW domain of Yes kinase-associated protein by its PY motifs. The function of this protein has not been determined.

订购热线: 4008-898-798

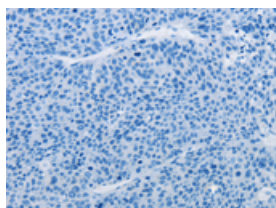
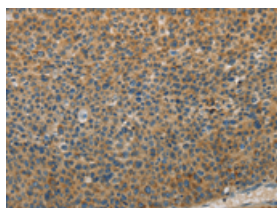
## Applications

### Immunohistochemistry

Predicted cell location: Cytoplasm

Positive control: Human liver cancer

Recommended dilution: 50-100

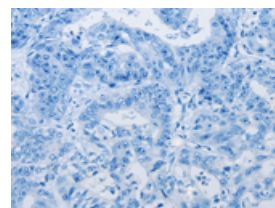
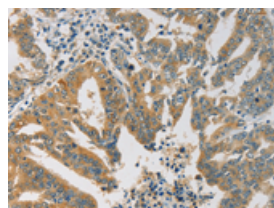


The image on the left is immunohistochemistry of paraffin-embedded Human liver cancer tissue using ml152205(WBP2 Antibody) at dilution 1/20, on the right is treated with synthetic peptide. (Original magnification:  $\times 200$ )

Predicted cell location: Cytoplasm

Positive control: Human gastric cancer

Recommended dilution: 50-100



The image on the left is immunohistochemistry of paraffin-embedded Human gastric cancer tissue using ml152205(WBP2 Antibody) at dilution 1/20, on the right is treated with synthetic peptide. (Original magnification:  $\times 200$ )

### Western blotting

Predicted band size: 28 kDa

Positive control: Mouse thymus tissue

Recommended dilution: 200-1000

Gel: 12% SDS-PAGE

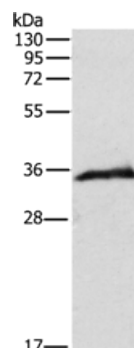
Lysate: 40  $\mu$ g

Lane: Mouse thymus tissue

Primary antibody: ml152205(WBP2 Antibody) at dilution 1/250

Secondary antibody: Goat anti rabbit IgG at 1/8000 dilution

Exposure time: 5 seconds



### ELISA

Recommended dilution: 1000-2000

联系电话: 4008-898-798, 021-61725725

联系QQ: 2881505695, 2881505696

邮箱: [mlbio\\_cn@yeah.net](mailto:mlbio_cn@yeah.net)

网址: [www.mlbio.cn](http://www.mlbio.cn)