

Anti-WBSCR22 antibody

Cat. No.	ml152209
Package	25 µl/100 µl/200 µl
Storage	-20°C, pH7.4 PBS, 0.05% NaN ₃ , 40% Glycerol

Product overview

Description	Anti-WBSCR22 rabbit polyclonal antibody
Applications	ELISA, WB
Immunogen	Synthetic peptide of human WBSCR22
Reactivity	Human, Mouse
Content	2.8 mg/ml
Host species	Rabbit
Ig class	Immunogen-specific rabbit IgG
Purification	Antigen affinity purification

Target information

Symbol	WBSCR22
Full name	Williams Beuren syndrome chromosome region 22
Synonyms	WBMT; MERM1; PP3381; HUSSY-3; HASJ4442
Swissprot	O43709

Target Background

This gene encodes a protein containing a nuclear localization signal and an S-adenosyl-L-methionine binding motif typical of methyltransferases, suggesting that the encoded protein may act on DNA methylation. This gene is deleted in Williams syndrome, a multisystem developmental disorder caused by the deletion of contiguous genes at 7q11.23. Alternatively spliced transcript variants have been found.

订购热线: 4008-898-798

Applications

Western blotting

Predicted band size: 32 kDa

Positive control: K562 cells

Recommended dilution: 200-1000

Gel: 10% SDS-PAGE

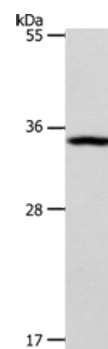
Lysate: 40 µg

Lane: K562 cells

Primary antibody: ml152209(WBSCR22 Antibody) at
dilution 1/100

Secondary antibody: Goat anti rabbit IgG at 1/8000 dilution

Exposure time: 30 seconds



ELISA

Recommended dilution: 1000-2000

联系电话: 4008-898-798, 021-61725725

联系QQ: 2881505695, 2881505696

邮箱: mlbio_cn@yeah.net

网址: www.mlbio.cn