

Anti-WDR6 antibody

Cat. No.	ml152226
Package	25 µl/100 µl/200 µl
Storage	-20°C, pH7.4 PBS, 0.05% NaN ₃ , 40% Glycerol

Product overview

Description	Anti-WDR6 rabbit polyclonal antibody
Applications	ELISA, WB
Immunogen	Synthetic peptide of human WDR6
Reactivity	Human, Mouse, Rat
Content	2 mg/ml
Host species	Rabbit
Ig class	Immunogen-specific rabbit IgG
Purification	Antigen affinity purification

Target information

Symbol	WDR6
Full name	WD repeat domain 6
Synonyms	
Swissprot	Q9NNW5

Target Background

This gene encodes a member of the WD repeat protein family. WD repeats are minimally conserved regions of approximately 40 amino acids typically bracketed by gly-his and trp-aspartate (GH-WD), which may facilitate formation of heterotrimeric or multiprotein complexes. The encoded protein interacts with serine/threonine kinase 11, and is implicated in cell growth arrest.

订购热线: 4008-898-798

Applications

Western blotting

Predicted band size: 122 kDa

Positive control: HeLa and NIH/3T3 cells

Recommended dilution: 500-2000

Gel: 8%SDS-PAGE

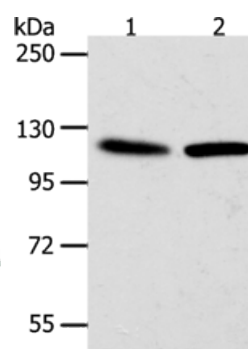
Lysate: 40 µg

Lane 1-2: HeLa cells, NIH/3T3 cells

Primary antibody: ml152226(WDR6 Antibody) at dilution 1/1000

Secondary antibody: Goat anti rabbit IgG at 1/8000 dilution

Exposure time: 2 minutes



ELISA

Recommended dilution: 1000-5000

联系电话: 4008-898-798, 021-61725725

联系QQ: 2881505695, 2881505696

邮箱: mlbio_cn@yeah.net

网址: www.mlbio.cn