

Anti-ZBTB3 antibody

Cat. No.	ml156016
Package	25 µl/100 µl/200 µl
Storage	-20°C, pH7.4 PBS, 0.05% NaN ₃ , 40% Glycerol

Product overview

Description	Anti-ZBTB3 rabbit polyclonal antibody
Applications	ELISA, WB, IHC
Immunogen	Synthetic peptide of human ZBTB3
Reactivity	Human, Mouse
Content	2.6 mg/ml
Host species	Rabbit
Ig class	Immunogen-specific rabbit IgG
Purification	Antigen affinity purification

Target information

Symbol	ZBTB3
Full name	zinc finger and BTB domain containing 3
Synonyms	
Swissprot	Q9H5J0

Target Background

The BTB (Broad-Complex, Tramtrack and Bric a brac) domain, also known as the POZ (POxvirus and Zinc finger) domain, is an N-terminal homodimerization domain that contains multiple copies of kelch repeats and/or C2H2-type zinc fingers. Proteins that contain BTB domains are thought to be involved in transcriptional regulation via control of chromatin structure and function. ZBTB3 (zinc finger and BTB domain containing 3) is a 574 amino acid protein that contains one BTB (POZ) domain and two C2H2-type zinc fingers. Localized to the nucleus, ZBTB3 is thought to play a role in transcriptional regulation events. The gene encoding ZBTB3 maps to human chromosome 11, which houses over 1,400 genes and comprises nearly 4% of the human genome.

订购热线: 4008-898-798

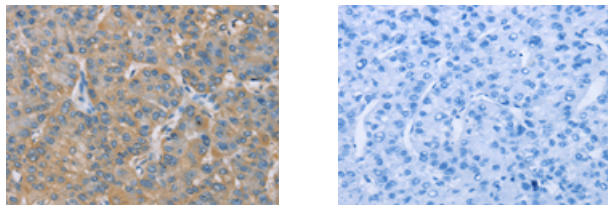
Applications

Immunohistochemistry

Predicted cell location: Cytoplasm

Positive control: Human liver cancer

Recommended dilution: 50-200



The image on the left is immunohistochemistry of paraffin-embedded Human liver cancer tissue using ml156016(ZBTB3 Antibody) at dilution 1/50, on the right is treated with synthetic peptide. (Original magnification: $\times 200$)

Western blotting

Predicted band size: 62 kDa

Positive control: HepG2 cells

Recommended dilution: 200-1000

Gel: 8%SDS-PAGE

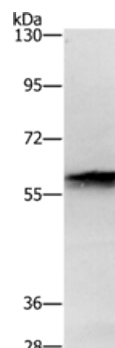
Lysate: 40 μ g

Lane: HepG2 cells

Primary antibody: ml156016(ZBTB3 Antibody) at dilution 1/500

Secondary antibody: Goat anti rabbit IgG at 1/8000 dilution

Exposure time: 10 seconds



ELISA

Recommended dilution: 1000-2000

联系电话: 4008-898-798, 021-61725725

联系QQ: 2881505695, 2881505696

邮箱: mlbio_cn@yeah.net

网址: www.mlbio.cn