

Anti-ZBTB7A antibody

Cat. No.	ml156021
Package	25 µl/100 µl/200 µl
Storage	-20°C, pH7.4 PBS, 0.05% NaN ₃ , 40% Glycerol

Product overview

Description	Anti-ZBTB7A rabbit polyclonal antibody
Applications	ELISA, WB
Immunogen	Synthetic peptide of human ZBTB7A
Reactivity	Human, Mouse, Rat
Content	1.8 mg/ml
Host species	Rabbit
Ig class	Immunogen-specific rabbit IgG
Purification	Antigen affinity purification

Target information

Symbol	ZBTB7A
Full name	zinc finger and BTB domain containing 7A
Synonyms	LRF; FBI1; FBI-1; ZBTB7; ZNF857A; pokemon
Swissprot	O95365

Target Background

LRF, formerly identified as Pokemon, is a poxvirus zinc finger (POZ) domain-containing transcription factor that influences cell differentiation. LRF (for leukemia/lymphoma related factor) is also known as zinc finger and BTB domain containing 7A, ZBTB7, TIP21, FBI1 and FBI-1. POZ-domain transcription factors contain a POZ or BTB type protein-protein interaction domain at their N-terminus and Kruppel-type zinc fingers at their C-terminus. LRF is inducible during both murine and human preadipocyte differentiation and may contribute to adipogenesis through influencing the switch from cellular proliferation to terminal differentiation.

订购热线: 4008-898-798

Applications

Western blotting

Predicted band size: 61 kDa

Positive control: Hepg2 and NIH/3T3 cells

Recommended dilution: 500-2000

Gel: 8%SDS-PAGE

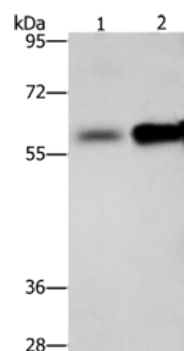
Lysate: 40 µg

Lane 1-2: Hepg2 cells, NIH/3T3 cells

Primary antibody: ml156021(ZBTB7A Antibody) at dilution 1/500

Secondary antibody: Goat anti rabbit IgG at 1/8000 dilution

Exposure time: 1 minute



ELISA

Recommended dilution: 2000-5000

联系电话: 4008-898-798, 021-61725725

联系QQ: 2881505695, 2881505696

邮箱: mlbio_cn@yeah.net

网址: www.mlbio.cn