

## Anti-CREBZF antibody

<b>Cat. No.</b>	ml156022
<b>Package</b>	25 µl/100 µl/200 µl
<b>Storage</b>	-20°C, pH7.4 PBS, 0.05% NaN <sub>3</sub> , 40% Glycerol

### Product overview

<b>Description</b>	Anti-CREBZF rabbit polyclonal antibody
<b>Applications</b>	ELISA, WB, IHC
<b>Immunogen</b>	Synthetic peptide of human CREBZF
<b>Reactivity</b>	Human, Mouse
<b>Content</b>	0.4 mg/ml
<b>Host species</b>	Rabbit
<b>Ig class</b>	Immunogen-specific rabbit IgG
<b>Purification</b>	Antigen affinity purification

### Target information

<b>Symbol</b>	CREBZF
<b>Full name</b>	CREB/ATF bZIP transcription factor
<b>Synonyms</b>	ZF; SMILE
<b>Swissprot</b>	Q9NS37

### Target Background

Host cell factor (HCF) is a cellular cofactor required for the activation of VP16 which expresses the herpes simplex virus immediate early gene. V16 binds to HCF through a 4-amino acid motif similar to the HCF binding domain of the basic leucine-zipper proteins Luman and Zhangfei (ZF). Luman activates promoters containing cAMP or unfolded protein response elements (UPRE). Zhangfei suppresses the transcriptional activity of Luman, but requires HCF binding which may target Luman and Zhangfei to a common location. Sequence analysis predicts that the deduced 272-amino acid Zhangfei protein has a negatively charged N terminus, a leucine zipper of 6 heptad leucine repeats separated by a conserved 6-amino acid spacer, a basic domain, and a bZIP region. It is also presumed that the N-terminal acidic region of Zhangfei is an activation domain.

订购热线: 4008-898-798

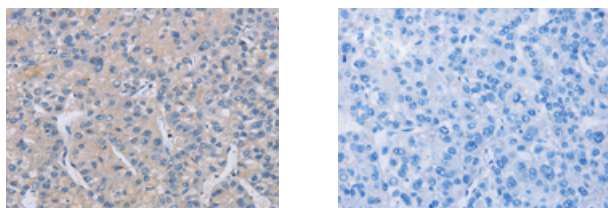
### Applications

#### Immunohistochemistry

Predicted cell location: Cytoplasm

Positive control: Human liver cancer

Recommended dilution: 25-100



The image on the left is immunohistochemistry of paraffin-embedded Human liver cancer tissue using ml156022(CREBZF Antibody) at dilution 1/50, on the right is treated with synthetic peptide. (Original magnification:  $\times 200$ )

#### Western blotting

Predicted band size: 37 kDa

Positive control: Mouse brain tissue and PC3 cells

Recommended dilution: 500-2000

Gel: 8%SDS-PAGE

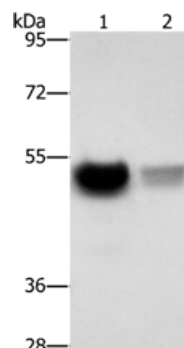
Lysate: 40  $\mu$ g

Lane 1-2: Mouse brain tissue, PC3 cells

Primary antibody: ml156022(CREBZF Antibody) at dilution 1/500

Secondary antibody: Goat anti rabbit IgG at 1/8000 dilution

Exposure time: 10 seconds



#### ELISA

Recommended dilution: 2000-5000

联系电话: 4008-898-798, 021-61725725

联系QQ: 2881505695, 2881505696

邮箱: [mlbio\\_cn@yeah.net](mailto:mlbio_cn@yeah.net)

网址: [www.mlbio.cn](http://www.mlbio.cn)