

Anti-ZDHHC17 antibody

Cat. No.	ml156023
Package	25 µl/100 µl/200 µl
Storage	-20°C, pH7.4 PBS, 0.05% NaN ₃ , 40% Glycerol

Product overview

Description	Anti-ZDHHC17 rabbit polyclonal antibody
Applications	ELISA, WB
Immunogen	Synthetic peptide of human ZDHHC17
Reactivity	Human, Mouse, Rat
Content	0.9 mg/ml
Host species	Rabbit
Ig class	Immunogen-specific rabbit IgG
Purification	Antigen affinity purification

Target information

Symbol	ZDHHC17
Full name	zinc finger, DHHC-type containing 17
Synonyms	HIP3; HYPH; HIP14; HSPC294
Swissprot	Q8IUH5

Target Background

Palmitoyltransferase ZDHHC17 is an enzyme that contains a DHHC domain that in humans is encoded by the ZDHHC17 gene. Palmitoyltransferase specific for a subset of neuronal proteins, including SNAP25, DLG4/PSD95, GAD2, SYT1 and HD. Palmitoylates MPP1 in erythrocytes. May be involved in the sorting or targeting of critical proteins involved in the initiating events of endocytosis at the plasma membrane. Has transforming activity. Mediates Mg²⁺ transport.

订购热线: 4008-898-798

Applications

Western blotting

Predicted band size: 73 kDa

Positive control: Mouse brain and human fetal brain tissue

Recommended dilution: 200-1000

Gel: 8%SDS-PAGE

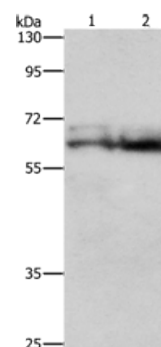
Lysate: 60 µg

Lane 1-2: Mouse brain tissue, human fetal brain tissue

Primary antibody: ml156023(ZDHHC17 Antibody) at
dilution 1/500

Secondary antibody: Goat anti rabbit IgG at 1/8000 dilution

Exposure time: 5 seconds



ELISA

Recommended dilution: 1000-2000

联系电话: 4008-898-798, 021-61725725

联系QQ: 2881505695, 2881505696

邮箱: mlbio_cn@yeah.net

网址: www.mlbio.cn