

## Anti-ZFYVE19 antibody

<b>Cat. No.</b>	ml156028
<b>Package</b>	25 µl/100 µl/200 µl
<b>Storage</b>	-20°C, pH7.4 PBS, 0.05% NaN <sub>3</sub> , 40% Glycerol

### Product overview

<b>Description</b>	Anti-ZFYVE19 rabbit polyclonal antibody
<b>Applications</b>	ELISA, WB, IHC
<b>Immunogen</b>	Synthetic peptide of human ZFYVE19
<b>Reactivity</b>	Human
<b>Content</b>	2 mg/ml
<b>Host species</b>	Rabbit
<b>Ig class</b>	Immunogen-specific rabbit IgG
<b>Purification</b>	Antigen affinity purification

### Target information

<b>Symbol</b>	ZFYVE19
<b>Full name</b>	zinc finger, FYVE domain containing 19
<b>Synonyms</b>	MPFYVE
<b>Swissprot</b>	Q96K21

### Target Background

ZFYVE19 (zinc finger, FYVE domain containing 19), also known as MPFYVE (MLL partner containing FYVE domain), is a 471 amino acid protein that contains one FYVE-type zinc finger. Expressed in heart, brain, kidney, skeletal muscle and liver, ZFYVE19 may participate in transcriptional regulation events within the cell. Defects in the gene encoding ZFYVE19 are associated with acute myeloblastic leukemia (AML), a rapidly progressing cancer of the myeloid line of white blood cells that is characterized by fever, anemia, bone pain, shortness of breath and frequent infections. Three isoforms of ZFYVE19 exist due to alternative splicing events.

订购热线: 4008-898-798

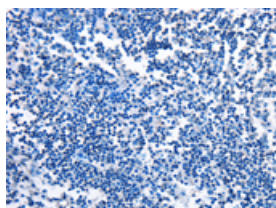
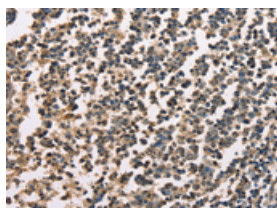
## Applications

### Immunohistochemistry

Predicted cell location: Cytoplasm

Positive control: Human tonsil

Recommended dilution: 50-200

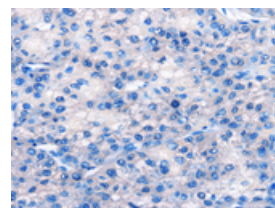
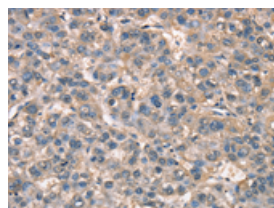


The image on the left is immunohistochemistry of paraffin-embedded Human tonsil tissue using ml156028(ZFYVE19 Antibody) at dilution 1/60, on the right is treated with synthetic peptide. (Original magnification:  $\times 200$ )

Predicted cell location: Cytoplasm

Positive control: Human liver cancer

Recommended dilution: 50-200



The image on the left is immunohistochemistry of paraffin-embedded Human liver cancer tissue using ml156028(ZFYVE19 Antibody) at dilution 1/60, on the right is treated with synthetic peptide. (Original magnification:  $\times 200$ )

### Western blotting

Predicted band size: 52 kDa

Positive control: Hela and A431 cells

Recommended dilution: 500-2000

Gel: 8%SDS-PAGE

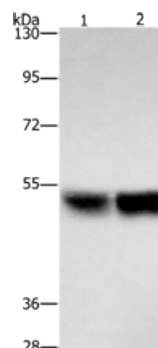
Lysate: 40  $\mu$ g

Lane 1-2: Hela cells, A431 cells

Primary antibody: ml156028(ZFYVE19 Antibody) at dilution 1/500

Secondary antibody: Goat anti rabbit IgG at 1/8000 dilution

Exposure time: 40 seconds



### ELISA

Recommended dilution: 2000-5000

联系电话: 4008-898-798, 021-61725725

联系QQ: 2881505695, 2881505696

邮箱: [mlbio\\_cn@yeah.net](mailto:mlbio_cn@yeah.net)

网址: [www.mlbio.cn](http://www.mlbio.cn)