

Anti-ZFYVE19 antibody

Cat. No.	ml156029
Package	25 µl/100 µl/200 µl
Storage	-20°C, pH7.4 PBS, 0.05% NaN ₃ , 40% Glycerol

Product overview

Description	Anti-ZFYVE19 rabbit polyclonal antibody
Applications	ELISA, WB, IHC
Immunogen	Synthetic peptide of human ZFYVE19
Reactivity	Human
Content	2 mg/ml
Host species	Rabbit
Ig class	Immunogen-specific rabbit IgG
Purification	Antigen affinity purification

Target information

Symbol	ZFYVE19
Full name	zinc finger, FYVE domain containing 19
Synonyms	MPFYVE
Swissprot	Q96K21

Target Background

ZFYVE19 (zinc finger, FYVE domain containing 19), also known as MPFYVE (MLL partner containing FYVE domain), is a 471 amino acid protein that contains one FYVE-type zinc finger. Expressed in heart, brain, kidney, skeletal muscle and liver, ZFYVE19 may participate in transcriptional regulation events within the cell. Defects in the gene encoding ZFYVE19 are associated with acute myeloblastic leukemia (AML), a rapidly progressing cancer of the myeloid line of white blood cells that is characterized by fever, anemia, bone pain, shortness of breath and frequent infections. Three isoforms of ZFYVE19 exist due to alternative splicing events.

订购热线: 4008-898-798

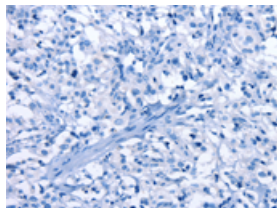
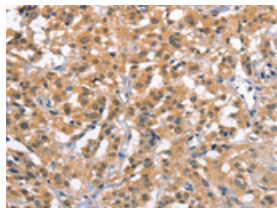
Applications

Immunohistochemistry

Predicted cell location: Cytoplasm

Positive control: Human thyroid cancer

Recommended dilution: 50-200

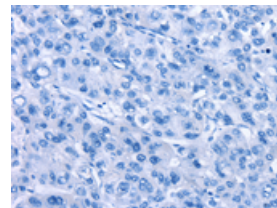
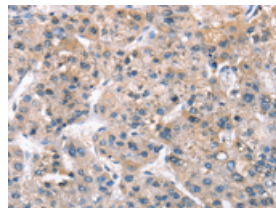


The image on the left is immunohistochemistry of paraffin-embedded Human thyroid cancer tissue using ml156029(ZFYVE19 Antibody) at dilution 1/61, on the right is treated with synthetic peptide. (Original magnification: $\times 200$)

Predicted cell location: Cytoplasm

Positive control: Human liver cancer

Recommended dilution: 50-200



The image on the left is immunohistochemistry of paraffin-embedded Human liver cancer tissue using ml156029(ZFYVE19 Antibody) at dilution 1/61, on the right is treated with synthetic peptide. (Original magnification: $\times 200$)

Western blotting

Predicted band size: 52 kDa

Positive control: Hela and A431 cells

Recommended dilution: 500-2000

Gel: 8% SDS-PAGE

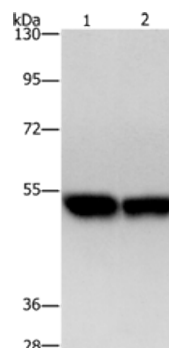
Lysate: 40 μ g

Lane 1-2: Hela cells, A431 cells

Primary antibody: ml156029(ZFYVE19 Antibody) at dilution 1/500

Secondary antibody: Goat anti rabbit IgG at 1/8000 dilution

Exposure time: 20 seconds



ELISA

Recommended dilution: 2000-5000

联系电话: 4008-898-798, 021-61725725

联系QQ: 2881505695, 2881505696

邮箱: mlbio_cn@yeah.net

网址: www.mlbio.cn