

Anti-KRTAP11-1 antibody

Cat. No.	ml162863
Package	25 µl/100 µl/200 µl
Storage	-20°C, pH7.4 PBS, 0.05% NaN ₃ , 40% Glycerol

Product overview

Description	Anti-KRTAP11-1 rabbit polyclonal antibody
Applications	ELISA, WB
Immunogen	Synthetic peptide of human KRTAP11-1
Reactivity	Human, Mouse
Content	1.1 mg/ml
Host species	Rabbit
Ig class	Immunogen-specific rabbit IgG
Purification	Antigen affinity purification

Target information

Symbol	KRTAP11-1
Full name	keratin associated protein 11-1
Synonyms	HACL1; HACL-1; KAP11.1
Swissprot	Q8IUC1

Target Background

Hair is a structure that is unique to mammals. It plays an important role in the retention of heat, as well as sexual dimorphism, attraction of mates and protection of skin. The major components of hair are α -keratins and keratin-associated proteins (KRTAPs or KAPs), each of which are encoded by multigene families. Hair keratins form an intermediate filament (IF) network, which is embedded in an interfilamentous matrix consisting of KRTAPs. KRTAPS comprise three major groups, which are essential for the formation of rigid and resistant hair shafts through disulfide bond cross-linking or hydrophobic interactions with keratins. These groups are designated high cysteine (HS), which includes subfamilies 1, 2, 3, 10, 12, 16, 29 and 31, ultrahigh cysteine, including subfamilies 4, 5, 9, 17, 28, 30, 32 and 33, and high glycine-tyrosine (HGT), which includes subfamilies 6, 7, 8, 19, 20 and 21. In addition, subfamilies 11, 13, 24-27, 29, 34 and 35 have high serine content but relative low cysteine content. After further phylogenetic studies, subfamilies 14 and 15 have been grouped with subfamily 13 and subfamily 22 was combined with subfamily 19.

订购热线: 4008-898-798

Applications

Western blotting

Predicted band size: 17 kDa

Positive control: Mouse brain tissue and Raji cell lysates

Recommended dilution: 500-2000

Gel: 12% SDS-PAGE

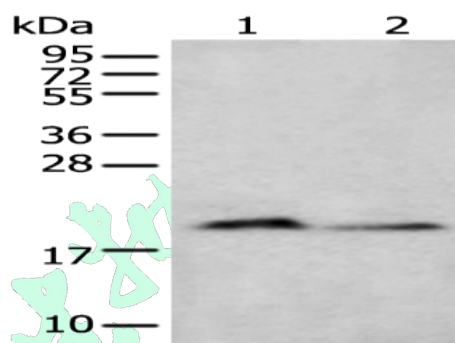
Lysate: 40 µg

Lane 1-2: Mouse brain tissue and Raji cell lysates

Primary antibody: ml162863(KRTAP11-1 Antibody) at dilution 1/400

Secondary antibody: Goat anti rabbit IgG at 1/8000 dilution

Exposure time: 5 seconds



ELISA

Recommended dilution: 5000-10000

联系电话: 4008-898-798, 021-61725725

联系QQ: 2881505695, 2881505696

邮箱: mlbio_cn@yeah.net

网址: www.mlbio.cn