

## Anti-pan-AKT antibody

|                 |   |
|-----------------|---|
| <b>Cat. No.</b> | ml160001  |
| <b>Package</b>  | 25 µl/100 µl/200 µl                                     |
| <b>Storage</b>  | -20°C, pH7.4 PBS, 0.05% NaN <sub>3</sub> , 40% Glycerol |

### Product overview

|                     |   |
|---------------------|---|
| <b>Description</b>  | Anti-pan-AKT rabbit polyclonal antibody |
| <b>Applications</b> | ELISA, WB                               |
| <b>Immunogen</b>    | Synthetic peptide of human pan-AKT      |
| <b>Reactivity</b>   | Human, Mouse, Rat                       |
| <b>Content</b>      | 0.1 mg/ml                               |
| <b>Host species</b> | Rabbit                                  |
| <b>Ig class</b>     | Immunogen-specific rabbit IgG           |
| <b>Purification</b> | Antigen affinity purification           |

### Target information

|                  |  |
|------------------|--|
| <b>Symbol</b>    | AKT1   |
| <b>Full name</b> | AKT serine/threonine kinase 1                    |
| <b>Synonyms</b>  | AKT; PKB; RAC; CWS6; PRKBA; PKB-ALPHA; RAC-ALPHA |
| <b>Swissprot</b> | P31749   |

### Target Background

The serine-threonine protein kinase encoded by the AKT1 gene is catalytically inactive in serum-starved primary and immortalized fibroblasts. AKT1 and the related AKT2 are activated by platelet-derived growth factor. The activation is rapid and specific, and it is abrogated by mutations in the pleckstrin homology domain of AKT1. It was shown that the activation occurs through phosphatidylinositol 3-kinase. In the developing nervous system AKT is a critical mediator of growth factor-induced neuronal survival. Survival factors can suppress apoptosis in a transcription-independent manner by activating the serine/threonine kinase AKT1, which then phosphorylates and inactivates components of the apoptotic machinery. Mutations in this gene have been associated with the Proteus syndrome. Multiple alternatively spliced transcript variants have been found for this gene.

订购热线: 4008-898-798

#### Applications

##### Western blotting

Predicted band size: 56 kDa

Positive control: Mouse liver tissue lysate

Recommended dilution: 500-2000

Gel: 8%SDS-PAGE

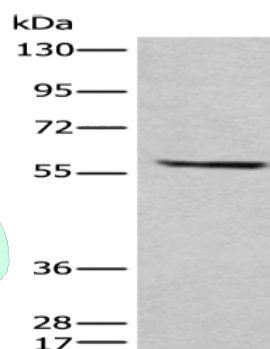
Lysate: 40 µg

Lane: Mouse liver tissue lysate

Primary antibody: ml160001(AKT1 Antibody) at dilution 1/600

Secondary antibody: Goat anti rabbit IgG at 1/8000 dilution

Exposure time: 30 seconds



##### ELISA

Recommended dilution: 5000-10000

联系电话: 4008-898-798, 021-61725725

联系QQ: 2881505695, 2881505696

邮箱: [mlbio\\_cn@yeah.net](mailto:mlbio_cn@yeah.net)

网址: [www.mlbio.cn](http://www.mlbio.cn)