

Anti-ABCB9 antibody

Cat. No.	ml160017
Package	25 µl/100 µl/200 µl
Storage	-20°C, pH7.4 PBS, 0.05% NaN ₃ , 40% Glycerol

Product overview

Description	Anti-ABCB9 rabbit polyclonal antibody
Applications	ELISA, WB, IHC
Immunogen	Synthetic peptide of human ABCB9
Reactivity	Human
Content	0.3 mg/ml
Host species	Rabbit
Ig class	Immunogen-specific rabbit IgG
Purification	Antigen affinity purification

Target information

Symbol	ABCB9
Full name	ATP-binding cassette, sub-family B (MDR/TAP), member 9
Synonyms	TAPL, EST122234
Swissprot	Q9NP78

Target Background

The membrane-associated protein encoded by this gene is a member of the superfamily of ATP-binding cassette (ABC) transporters. ABC proteins transport various molecules across extra- and intra-cellular membranes. ABC genes are divided into seven distinct subfamilies (ABC1, MDR/TAP, MRP, ALD, OABP, GCN20, White). This protein is a member of the MDR/TAP subfamily. Members of the MDR/TAP subfamily are involved in multidrug resistance as well as antigen presentation. This family member functions in the translocation of peptides from the cytosol into the lysosomal lumen. Alternative splicing of this gene results in distinct isoforms which are likely to have different substrate specificities.

订购热线: 4008-898-798

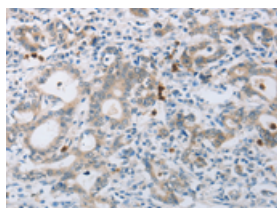
Applications

Immunohistochemistry

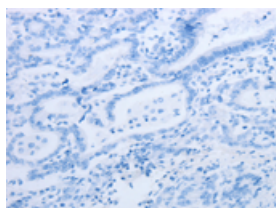
Predicted cell location: Cytoplasm

Positive control: Human gasrtic cancer

Recommended dilution: 15-50



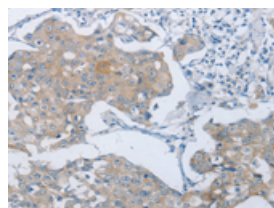
The image on the left is immunohistochemistry of paraffin-embedded Human gasrtic cancer tissue using ml160017(ABCB9 Antibody) at dilution 1/15, on the right is treated with synthetic peptide. (Original magnification: $\times 200$)



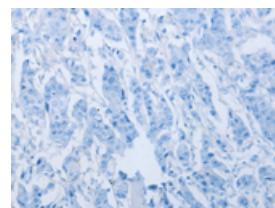
Predicted cell location: Cytoplasm

Positive control: Human breast cancer

Recommended dilution: 15-50



The image on the left is immunohistochemistry of paraffin-embedded Human breast cancer tissue using ml160017(ABCB9 Antibody) at dilution 1/15, on the right is treated with synthetic peptide. (Original magnification: $\times 200$)



Western blotting

Predicted band size: 84 kDa

Positive control: Hela cells

Recommended dilution: 200-1000

Gel: 8%SDS-PAGE

Lysate: 40 μ g

Lane: Hela cells

Primary antibody: ml160017(ABCB9 Antibody) at dilution 1/250

Secondary antibody: Goat anti rabbit IgG at 1/8000 dilution

Exposure time: 1 minute



ELISA

Recommended dilution: 1000-2000

联系电话: 4008-898-798, 021-61725725

联系QQ: 2881505695, 2881505696

邮箱: mlbio_cn@yeah.net

网址: www.mlbio.cn