

Anti-RAB38 antibody

Cat. No.	ml160040
Package	25 µl/100 µl/200 µl
Storage	-20°C, pH7.4 PBS, 0.05% NaN ₃ , 40% Glycerol

Product overview

Description	Anti-RAB38 rabbit polyclonal antibody
Applications	ELISA, WB
Immunogen	Synthetic peptide of human RAB38
Reactivity	Human, Mouse
Content	0.4 mg/ml
Host species	Rabbit
Ig class	Immunogen-specific rabbit IgG
Purification	Antigen affinity purification

Target information

Symbol	RAB38
Full name	RAB38, member RAS oncogene family
Synonyms	rrGTPbp, NY-MEL-1
Swissprot	P57729

Target Background

Ras-related protein Rab-38 is a protein that in humans is encoded by the RAB38 gene. On the basis of human genome sequence data, the RAB38 locus on chromosome 11 is flanked proximally by tyrosinase at 11q14-q21 and distally by EED at 11q14.2-q22.3 and MYO7A at 11q13.5. In melanocytic cells RAB38 gene expression may be regulated by MITF. May be involved in melanosomal transport and docking. Involved in the proper sorting of TYRP1.

订购热线: 4008-898-798

Applications

Western blotting

Predicted band size: 24 kDa

Positive control: NIH/3T3 cells

Recommended dilution: 1000-5000

Gel: 10%SDS-PAGE

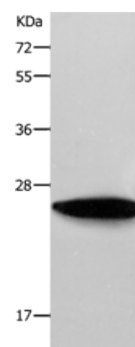
Lysate: 40 µg

Lane: NIH/3T3 cells

Primary antibody: ml160040(RAB38 Antibody) at dilution 1/550

Secondary antibody: Goat anti rabbit IgG at 1/8000 dilution

Exposure time: 10 seconds



ELISA

Recommended dilution: 2000-10000

联系电话: 4008-898-798, 021-61725725

联系QQ: 2881505695, 2881505696

邮箱: mlbio_cn@yeah.net

网址: www.mlbio.cn