

## Anti-RHOB antibody

<b>Cat. No.</b>	ml160056
<b>Package</b>	25 µl/100 µl/200 µl
<b>Storage</b>	-20°C, pH7.4 PBS, 0.05% NaN <sub>3</sub> , 40% Glycerol

### Product overview

<b>Description</b>	Anti-RHOB rabbit polyclonal antibody
<b>Applications</b>	ELISA, WB
<b>Immunogen</b>	Synthetic peptide of human RHOB
<b>Reactivity</b>	Human, Mouse, Rat
<b>Content</b>	0.4 mg/ml
<b>Host species</b>	Rabbit
<b>Ig class</b>	Immunogen-specific rabbit IgG
<b>Purification</b>	Antigen affinity purification

### Target information

<b>Symbol</b>	RHOB
<b>Full name</b>	Ras homolog family member B
<b>Synonyms</b>	ARH6, ARHB, RHOH6
<b>Swissprot</b>	P62745

### Target Background

Ras homolog gene family, member B, also known as RHOB, is a protein which in humans is encoded by the RHOB gene. RHOB is a member of the Rho GTP-binding protein family. Mediates apoptosis in neoplastically transformed cells after DNA damage. It is not necessary for development but affects cell adhesion and growth factor signaling in transformed cells. It plays a negative role in tumorigenesis as deletion causes tumor formation. It involved in intracellular protein trafficking of a number of proteins, and serves as a microtubule-dependent signal that is required for the myosin contractile ring formation during cell cycle cytokinesis. Required for genotoxic stress-induced cell death in breast cancer cells.

订购热线: 4008-898-798

#### Applications

##### Western blotting

Predicted band size: 22 kDa

Positive control: Mouse brain and fetal brain tissue

Recommended dilution: 1000-2000

Gel: 10% SDS-PAGE

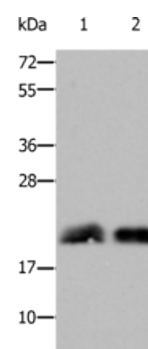
Lysate: 40 µg

Lane 1-2: Mouse brain tissue, Mouse fetal brain tissue

Primary antibody: ml160056 (RHOB Antibody) at dilution 1/800

Secondary antibody: Goat anti rabbit IgG at 1/8000 dilution

Exposure time: 15 seconds



##### ELISA

Recommended dilution: 2000-10000

联系电话: 4008-898-798, 021-61725725

联系QQ: 2881505695, 2881505696

邮箱: [mlbio\\_cn@yeah.net](mailto:mlbio_cn@yeah.net)

网址: [www.mlbio.cn](http://www.mlbio.cn)