

## Anti-CHRM2 antibody

<b>Cat. No.</b>	ml162985
<b>Package</b>	25 µl/100 µl/200 µl
<b>Storage</b>	-20°C, pH7.4 PBS, 0.05% NaN <sub>3</sub> , 40% Glycerol

### Product overview

<b>Description</b>	Anti-CHRM2 rabbit polyclonal antibody
<b>Applications</b>	ELISA, WB
<b>Immunogen</b>	Synthetic peptide of human CHRM2
<b>Reactivity</b>	Human, Mouse, Rat
<b>Content</b>	0.6 mg/ml
<b>Host species</b>	Rabbit
<b>Ig class</b>	Immunogen-specific rabbit IgG
<b>Purification</b>	Antigen affinity purification

### Target information

<b>Symbol</b>	CHRM2
<b>Full name</b>	cholinergic receptor, muscarinic 2
<b>Synonyms</b>	HM2
<b>Swissprot</b>	P08172

### Target Background

The muscarinic cholinergic receptors belong to a larger family of G protein-coupled receptors. The functional diversity of these receptors is defined by the binding of acetylcholine to these receptors and includes cellular responses such as adenylate cyclase inhibition, phosphoinositide degeneration, and potassium channel mediation. Muscarinic receptors influence many effects of acetylcholine in the central and peripheral nervous system.

订购热线: 4008-898-798

#### Applications

##### Western blotting

Predicted band size: 52 kDa

Positive control: Jurkat cell

Recommended dilution: 200-1000

Gel: 8%SDS-PAGE

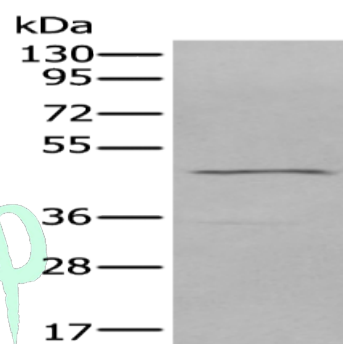
Lysate: 40 µg

Lane: Jurkat cell

Primary antibody: ml162985(CHRM2 Antibody) at dilution 1/200

Secondary antibody: Goat anti rabbit IgG at 1/8000 dilution

Exposure time: 30 seconds



##### ELISA

Recommended dilution: 5000-10000

联系电话: 4008-898-798, 021-61725725

联系QQ: 2881505695, 2881505696

邮箱: [mlbio\\_cn@yeah.net](mailto:mlbio_cn@yeah.net)

网址: [www.mlbio.cn](http://www.mlbio.cn)