

Anti-RAB5A antibody

Cat. No.	ml160063
Package	25 µl/100 µl/200 µl
Storage	-20°C, pH7.4 PBS, 0.05% NaN ₃ , 40% Glycerol

Product overview

Description	Anti-RAB5A rabbit polyclonal antibody
Applications	ELISA, WB
Immunogen	Synthetic peptide of human RAB5A
Reactivity	Human, Mouse, Rat
Content	0.3 mg/ml
Host species	Rabbit
Ig class	Immunogen-specific rabbit IgG
Purification	Antigen affinity purification

Target information

Symbol	RAB5A
Full name	Ras-related protein Rab-5A
Synonyms	RAB5
Swissprot	P20339

Target Background

Ras-related protein Rab-5A is a protein that in humans is encoded by the RAB5A gene. It is rate-limiting for homotypic early endosome fusion. It required for the fusion of plasma membranes and early endosomes, as well as contributes to the regulation of filopodia extension.

订购热线: 4008-898-798

Applications

Western blotting

Predicted band size: 24 kDa

Positive control: 231 cells and Human fetal brain tissue

Recommended dilution: 500-2000

Gel: 10% SDS-PAGE

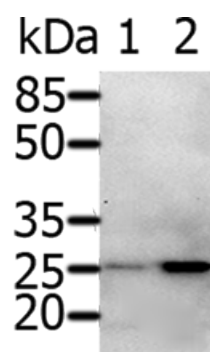
Lysate: 30 µg

Lane 1-2: 231 cells, Human fetal brain tissue

Primary antibody: ml160063(RAB5A Antibody) at dilution 1/600

Secondary antibody: Goat anti rabbit IgG at 1/8000 dilution

Exposure time: 1 minute



ELISA

Recommended dilution: 2000-10000

联系电话: 4008-898-798, 021-61725725

联系QQ: 2881505695, 2881505696

邮箱: mlbio_cn@yeah.net

网址: www.mlbio.cn