

Anti-RAB5C antibody

Cat. No.	ml160064
Package	25 µl/100 µl/200 µl
Storage	-20°C, pH7.4 PBS, 0.05% NaN ₃ , 40% Glycerol

Product overview

Description	Anti-RAB5C rabbit polyclonal antibody
Applications	ELISA, WB
Immunogen	Synthetic peptide of human RAB5C
Reactivity	Human, Mouse
Content	0.4 mg/ml
Host species	Rabbit
Ig class	Immunogen-specific rabbit IgG
Purification	Antigen affinity purification

Target information

Symbol	RAB5C
Full name	Ras-related protein Rab-5C
Synonyms	RABL, L1880, RAB5L, RAB5CL
Swissprot	P51148

Target Background

The protein is a member of the Rab protein family. Members of the Rab protein family are small GTPases of the Ras superfamily that are thought to ensure fidelity in the process of docking and/or fusion of vesicles with their correct acceptor compartment. The function is protein transport, Probably involved in vesicular traffic.

订购热线: 4008-898-798

Applications

Western blotting

Predicted band size: 24 kDa

Positive control: A549 and Lovo cells

Recommended dilution: 500-2000

Gel: 10% SDS-PAGE

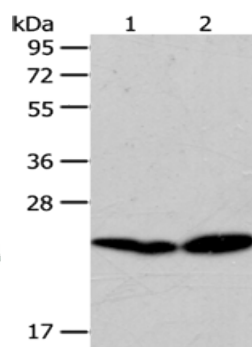
Lysate: 40 µg

Lane 1-2: A549 cells, Lovo cells

Primary antibody: ml160064(RAB5C Antibody) at dilution 1/100

Secondary antibody: Goat anti rabbit IgG at 1/8000 dilution

Exposure time: 30 seconds



ELISA

Recommended dilution: 2000-5000

联系电话: 4008-898-798, 021-61725725

联系QQ: 2881505695, 2881505696

邮箱: mlbio_cn@yeah.net

网址: www.mlbio.cn