

Anti-SLC7A5 antibody

Cat. No.	ml160088
Package	25 µl/100 µl/200 µl
Storage	-20°C, pH7.4 PBS, 0.05% NaN ₃ , 40% Glycerol

Product overview

Description	Anti-SLC7A5 rabbit polyclonal antibody
Applications	ELISA, WB
Immunogen	Synthetic peptide of human SLC7A5
Reactivity	Human, Mouse
Content	0.5 mg/ml
Host species	Rabbit
Ig class	Immunogen-specific rabbit IgG
Purification	Antigen affinity purification

Target information

Symbol	SLC7A5
Full name	Solute carrier family 7 member 5
Synonyms	E16, CD98, LAT1, 4F2LC, MPE16, hLAT1
Swissprot	Q01650

Target Background

Solute carrier family 7 member 5 also known as large neutral amino acids transporter small subunit 1 is a protein that in humans is encoded by the SLC7A5 gene. It is sodium-independent, high-affinity transport of large neutral amino acids such as phenylalanine, tyrosine, leucine, arginine and tryptophan, when associated with SLC3A2/4F2hc. It involved in cellular amino acid uptake and the transport of L-DOPA across the blood-brain barrier, and that of thyroid hormones triiodothyronine (T3) and thyroxine (T4) across the cell membrane in tissues such as placenta. Acts as an amino acid exchanger and plays a role in neuronal cell proliferation (neurogenesis) in brain.

订购热线: 4008-898-798

Applications

Western blotting

Predicted band size: 55 kDa

Positive control: Mouse brain tissue

Recommended dilution: 200-1000

Gel: 6% SDS-PAGE

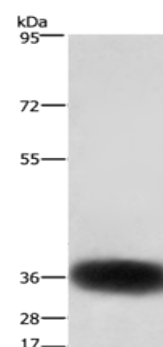
Lysate: 40 µg

Lane: Mouse brain tissue

Primary antibody: ml160088 (SLC7A5 Antibody) at dilution 1/300

Secondary antibody: Goat anti rabbit IgG at 1/8000 dilution

Exposure time: 10 seconds



ELISA

Recommended dilution: 1000-2000

联系电话: 4008-898-798, 021-61725725

联系QQ: 2881505695, 2881505696

邮箱: mlbio_cn@yeah.net

网址: www.mlbio.cn