

Anti-MIF antibody

Cat. No.	ml163076
Package	25 µl/100 µl/200 µl
Storage	-20°C, pH7.4 PBS, 0.05% NaN ₃ , 40% Glycerol

Product overview

Description	Anti-MIF rabbit polyclonal antibody
Applications	ELISA, WB
Immunogen	Synthetic peptide of human MIF
Reactivity	Human, Mouse, Rat
Content	0.4 mg/ml
Host species	Rabbit
Ig class	Immunogen-specific rabbit IgG
Purification	Antigen affinity purification

Target information

Symbol	MIF
Full name	macrophage migration inhibitory factor (glycosylation-inhibiting factor)
Synonyms	GIF; GLIF; MMIF
Swissprot	P14174

Target Background

This gene encodes a lymphokine involved in cell-mediated immunity, immunoregulation, and inflammation. It plays a role in the regulation of macrophage function in host defense through the suppression of anti-inflammatory effects of glucocorticoids. This lymphokine and the JAB1 protein form a complex in the cytosol near the peripheral plasma membrane, which may indicate an additional role in integrin signaling pathways.

订购热线: 4008-898-798

Applications

Western blotting

Predicted band size: 12 kDa

Positive control: Jurkat, Hela and HT-29 cell lysates

Recommended dilution: 200-1000

Gel: 12%SDS-PAGE

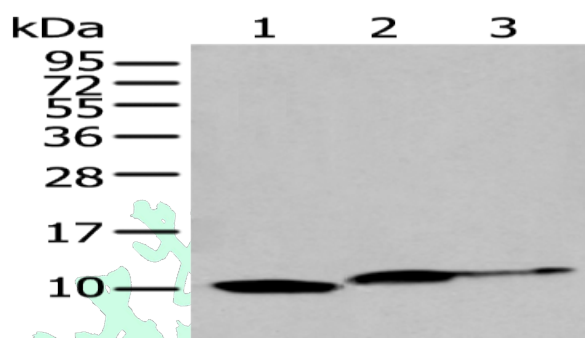
Lysate: 40 µg

Lane 1-3: Jurkat, Hela and HT-29 cell lysates

Primary antibody: ml163076(MIF Antibody) at dilution 1/200

Secondary antibody: Goat anti rabbit IgG at 1/8000 dilution

Exposure time: 50 seconds



ELISA

Recommended dilution: 2000-5000

联系电话: 4008-898-798, 021-61725725

联系QQ: 2881505695, 2881505696

邮箱: mlbio_cn@yeah.net

网址: www.mlbio.cn