

Anti-CCL1 antibody

Cat. No.	ml163103
Package	25 µl/100 µl/200 µl
Storage	-20°C, pH7.4 PBS, 0.05% NaN ₃ , 40% Glycerol

Product overview

Description	Anti-CCL1 rabbit polyclonal antibody
Applications	ELISA, WB
Immunogen	Synthetic peptide of human CCL1
Reactivity	Human
Content	1.1 mg/ml
Host species	Rabbit
Ig class	Immunogen-specific rabbit IgG
Purification	Antigen affinity purification

Target information

Symbol	CCL1
Full name	chemokine (C-C motif) ligand 1
Synonyms	P500; SISE; TCA3; I-309; SCYA1
Swissprot	P22362

Target Background

This antimicrobial gene is one of several chemokine genes clustered on the q-arm of chromosome 17. Chemokines form a superfamily of secreted proteins involved in immunoregulatory and inflammatory processes. The superfamily is divided into four subfamilies based on the arrangement of the N-terminal cysteine residues of the mature peptide. This chemokine, a member of the CC subfamily, is secreted by activated T cells and displays chemotactic activity for monocytes but not for neutrophils. It binds to the chemokine (C-C motif) receptor 8.

订购热线: 4008-898-798

Applications

Western blotting

Predicted band size: 11 kDa

Positive control: A431, Jurkat, Lovo and Hepg2 cell, Human breast cancer tissue lysates

Recommended dilution: 500-2000

Gel: 12%SDS-PAGE

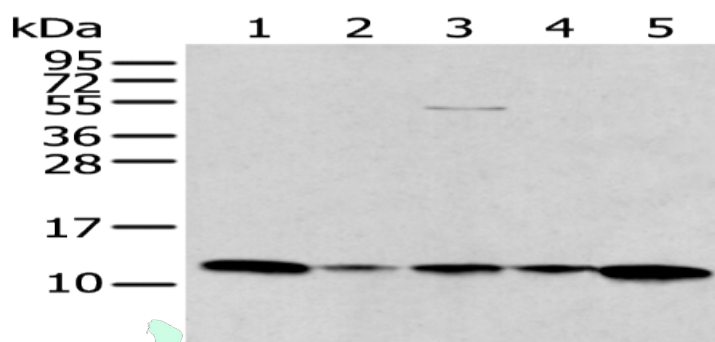
Lysate: 40 μ g

Lane 1-5: A431, Jurkat, Lovo and Hepg2 cell,
Human breast cancer tissue lysates

Primary antibody: ml163103(CCL1 Antibody) at
dilution 1/400

Secondary antibody: Goat anti rabbit IgG at
1/8000 dilution

Exposure time: 10 seconds



ELISA

Recommended dilution: 5000-10000

联系电话: 4008-898-798, 021-61725725

联系QQ: 2881505695, 2881505696

邮箱: mlbio_cn@yeah.net

网址: www.mlbio.cn