

Anti-LAMP3 antibody

Cat. No.	ml160245
Package	25 µl/100 µl/200 µl
Storage	-20°C, pH7.4 PBS, 0.05% NaN ₃ , 40% Glycerol

Product overview

Description	Anti-LAMP3 rabbit polyclonal antibody
Applications	ELISA, WB, IHC
Immunogen	Synthetic peptide of human LAMP3
Reactivity	Human
Content	0.1 mg/ml
Host species	Rabbit
Ig class	Immunogen-specific rabbit IgG
Purification	Antigen affinity purification

Target information

Symbol	LAMP3
Full name	lysosomal-associated membrane protein 3
Synonyms	LAMP; CD208; DCLAMP; LAMP-3; TSC403; DC LAMP; DC-LAMP
Swissprot	Q9UQV4

Target Background

DC-LAMP (DC-lysosome-associated membrane glycoprotein), also known as LAMP-3 (Lysosomal-associated membrane protein 3), TSC403 or CD208, is a 416 amino acid lysosome membrane protein that belongs to the LAMP family. DC-LAMP is expressed in lung, lymphoid organs and dendritic cells and is upregulated in carcinomas of the esophagus, colon, rectum, ureter, stomach, breast, fallopian tube, thyroid and parotid tissues. It is suggested that DC-LAMP may be responsible for changing lysosomal function after the transfer of peptide-MHC class II molecules to the surface of dendritic cells. DC-LAMP is thought to play an important part in enhancing metastatic potential and may be a prognostic factor for cervical cancer.

订购热线: 4008-898-798

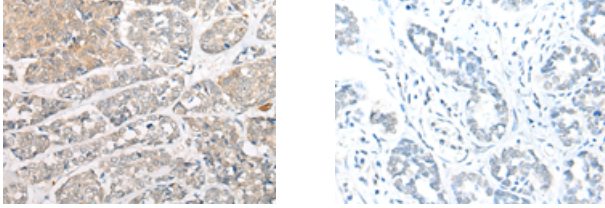
Applications

Immunohistochemistry

Predicted cell location: Cell membrane

Positive control: Human esophagus cancer

Recommended dilution: 20-100



The image on the left is immunohistochemistry of paraffin-embedded Human esophagus cancer tissue using ml160245(LAMP3 Antibody) at dilution 1/25, on the right is treated with synthetic peptide. (Original magnification: $\times 200$)

Western blotting

Predicted band size: 44 kDa

Positive control: Human tonsil tissue lysate

Recommended dilution: 200-1000

Gel: 8%SDS-PAGE

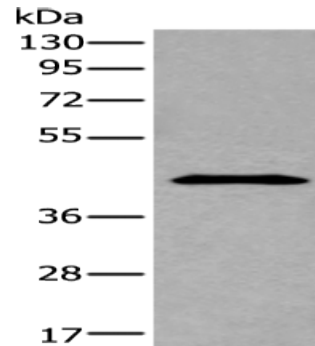
Lysate: 40 μ g

Lane: Human tonsil tissue lysate

Primary antibody: ml160245(LAMP3 Antibody) at dilution 1/200

Secondary antibody: Goat anti rabbit IgG at 1/8000 dilution

Exposure time: 15 seconds



ELISA

Recommended dilution: 5000-10000

联系电话: 4008-898-798, 021-61725725

联系QQ: 2881505695, 2881505696

邮箱: mlbio_cn@yeah.net

网址: www.mlbio.cn