

## Anti-Dap3 antibody

<b>Cat. No.</b>	ml160255
<b>Package</b>	25 µl/100 µl/200 µl
<b>Storage</b>	-20°C, pH7.4 PBS, 0.05% NaN <sub>3</sub> , 40% Glycerol

### Product overview

<b>Description</b>	Anti-Dap3 rabbit polyclonal antibody
<b>Applications</b>	ELISA, WB, IHC
<b>Immunogen</b>	Synthetic peptide of mouse Dap3
<b>Reactivity</b>	Human, Mouse
<b>Content</b>	0.5 mg/ml
<b>Host species</b>	Rabbit
<b>Ig class</b>	Immunogen-specific rabbit IgG
<b>Purification</b>	Antigen affinity purification

### Target information

<b>Symbol</b>	Dap3
<b>Full name</b>	death associated protein 3
<b>Synonyms</b>	DAP-3, 4921514D13Rik
<b>Swissprot</b>	Q9ER88

### Target Background

28S ribosomal protein S29, mitochondrial is a protein that in humans is encoded by the DAP3 gene. Mammalian mitochondrial ribosomal proteins are encoded by nuclear genes and help in protein synthesis within the mitochondrion. Mitochondrial ribosomes (mitoribosomes) consist of a small 28S subunit and a large 39S subunit. This protein potentially binds ATP/GTP and might be a functional partner of the mitoribosomal protein S27. Splice variants that differ in the 5' UTR have been found for this gene; both variants encode the same protein. Pseudogenes corresponding to this gene are found on chromosomes 1q and 2q. DAP3 has been shown to interact with FADD, TNFRSF10A, Glucocorticoid receptor and Heat shock protein 90kDa alpha (cytosolic), member A1.

订购热线: 4008-898-798

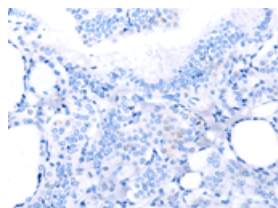
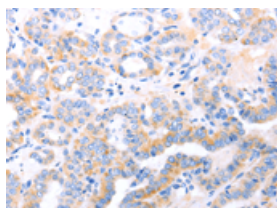
## Applications

### Immunohistochemistry

Predicted cell location: Cytoplasm

Positive control: Human thyroid cancer

Recommended dilution: 10-50

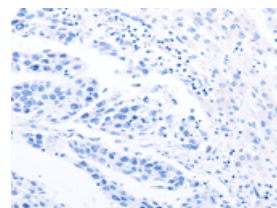
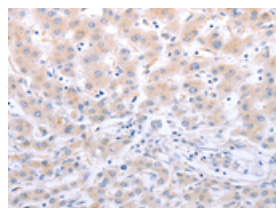


The image on the left is immunohistochemistry of paraffin-embedded Human thyroid cancer tissue using ml160255(Dap3 Antibody) at dilution 1/20, on the right is treated with synthetic peptide. (Original magnification:  $\times 200$ )

Predicted cell location: Cytoplasm

Positive control: Human liver cancer

Recommended dilution: 10-50



The image on the left is immunohistochemistry of paraffin-embedded Human liver cancer tissue using ml160255(Dap3 Antibody) at dilution 1/20, on the right is treated with synthetic peptide. (Original magnification:  $\times 200$ )

### Western blotting

Predicted band size: 45 kDa

Positive control: Hepg2 and Jurkat cells

Recommended dilution: 500-1000

Gel: 10% SDS-PAGE

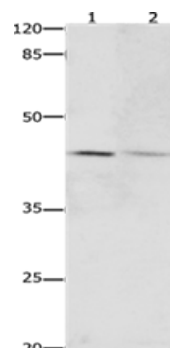
Lysate: 30  $\mu$ g

Lane 1-2: Hepg2 cells, Jurkat cells

Primary antibody: ml160255(Dap3 Antibody) at dilution 1/450

Secondary antibody: Goat anti rabbit IgG at 1/8000 dilution

Exposure time: 1 minute



### ELISA

Recommended dilution: 1000-5000

联系电话: 4008-898-798, 021-61725725

联系QQ: 2881505695, 2881505696

邮箱: [mlbio\\_cn@yeah.net](mailto:mlbio_cn@yeah.net)

网址: [www.mlbio.cn](http://www.mlbio.cn)