

## Anti-TNFRSF21 antibody

<b>Cat. No.</b>	ml160266
<b>Package</b>	25 µl/100 µl/200 µl
<b>Storage</b>	-20°C, pH7.4 PBS, 0.05% NaN <sub>3</sub> , 40% Glycerol

### Product overview

<b>Description</b>	Anti-TNFRSF21 rabbit polyclonal antibody
<b>Applications</b>	ELISA, WB
<b>Immunogen</b>	Synthetic peptide of human TNFRSF21
<b>Reactivity</b>	Human
<b>Content</b>	0.3 mg/ml
<b>Host species</b>	Rabbit
<b>Ig class</b>	Immunogen-specific rabbit IgG
<b>Purification</b>	Antigen affinity purification

### Target information

<b>Symbol</b>	TNFRSF21
<b>Full name</b>	tumor necrosis factor receptor superfamily, member 21
<b>Synonyms</b>	DR6, CD358, BM-018
<b>Swissprot</b>	O75509

### Target Background

The protein encoded by this gene is a member of the TNF-receptor superfamily. This receptor has been shown to activate NF-kappaB and MAPK8/JNK, and induce cell apoptosis. Through its death domain, this receptor interacts with TRADD protein, which is known to serve as an adaptor that mediates signal transduction of TNF-receptors. Knockout studies in mice suggested that this gene plays a role in T-helper cell activation, and may be involved in inflammation and immune regulation.

订购热线: 4008-898-798

#### Applications

##### Western blotting

Predicted band size: 72 kDa

Positive control: Human fetal brain tissue

Recommended dilution: 500-2000

Gel: 10%SDS-PAGE

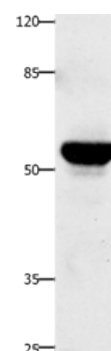
Lysate: 30  $\mu$ g

Lane: Human fetal brain tissue

Primary antibody: ml160266(TNFRSF21 Antibody) at dilution 1/420

Secondary antibody: Goat anti rabbit IgG at 1/8000 dilution

Exposure time: 30 seconds



##### ELISA

Recommended dilution: 1000-10000

联系电话: 4008-898-798, 021-61725725

联系QQ: 2881505695, 2881505696

邮箱: [mlbio\\_cn@yeah.net](mailto:mlbio_cn@yeah.net)

网址: [www.mlbio.cn](http://www.mlbio.cn)