

Anti-PFKFB3 antibody

Cat. No.	ml163113
Package	25 µl/100 µl/200 µl
Storage	-20°C, pH7.4 PBS, 0.05% NaN ₃ , 40% Glycerol

Product overview

Description	Anti-PFKFB3 rabbit polyclonal antibody
Applications	ELISA, WB
Immunogen	Synthetic peptide of human PFKFB3
Reactivity	Human, Rat
Content	0.5 mg/ml
Host species	Rabbit
Ig class	Immunogen-specific rabbit IgG
Purification	Antigen affinity purification

Target information

Symbol	PFKFB3
Full name	6-phosphofructo-2-kinase/fructose-2,6-biphosphatase 3
Synonyms	PFK2; IPFK2; iPFK-2
Swissprot	Q16875

Target Background

The protein encoded by this gene belongs to a family of bifunctional proteins that are involved in both the synthesis and degradation of fructose-2,6-bisphosphate, a regulatory molecule that controls glycolysis in eukaryotes. The encoded protein has a 6-phosphofructo-2-kinase activity that catalyzes the synthesis of fructose-2,6-bisphosphate (F2,6BP), and a fructose-2,6-biphosphatase activity that catalyzes the degradation of F2,6BP. This protein is required for cell cycle progression and prevention of apoptosis. It functions as a regulator of cyclin-dependent kinase 1, linking glucose metabolism to cell proliferation and survival in tumor cells. Several alternatively spliced transcript variants of this gene have been described, but the full-length nature of some of these variants has not been determined.

订购热线: 4008-898-798

Applications

Western blotting

Predicted band size: 60 kDa

Positive control: Jurkat, Hela, A431, A549 and 293T cell lysates

Recommended dilution: 500-2000

Gel: 8%SDS-PAGE

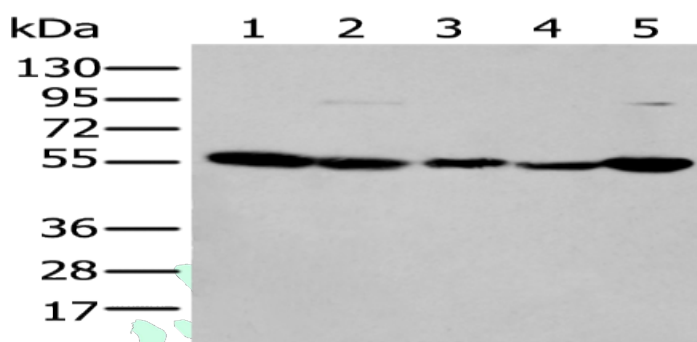
Lysate: 40 µg

Lane 1-5: Jurkat, Hela, A431, A549 and 293T cell lysates

Primary antibody: ml163113(PFKFB3 Antibody) at dilution 1/200

Secondary antibody: Goat anti rabbit IgG at 1/8000 dilution

Exposure time: 20 seconds



ELISA

Recommended dilution: 5000-10000

联系电话: 4008-898-798, 021-61725725

联系QQ: 2881505695, 2881505696

邮箱: mlbio_cn@yeah.net

网址: www.mlbio.cn