

Anti-PTGER2 antibody

Cat. No.	ml160303
Package	25 µl/100 µl/200 µl
Storage	-20°C, pH7.4 PBS, 0.05% NaN ₃ , 40% Glycerol

Product overview

Description	Anti-PTGER2 rabbit polyclonal antibody
Applications	ELISA, WB
Immunogen	Synthetic peptide of human PTGER2
Reactivity	Human
Content	0.3 mg/ml
Host species	Rabbit
Ig class	Immunogen-specific rabbit IgG
Purification	Antigen affinity purification

Target information

Symbol	PTGER2
Full name	prostaglandin E receptor 2 (subtype EP2), 53kDa
Synonyms	EP2
Swissprot	P43116

Target Background

This gene encodes a receptor for prostaglandin E₂, a metabolite of arachidonic acid which has different biologic activities in a wide range of tissues. Mutations in this gene are associated with aspirin-induced susceptibility to asthma. Prostaglandin E₂ receptor (53kDa), also known as EP2, is a prostaglandin receptor for prostaglandin E₂. It is encoded by the human gene PTGER2. Receptor for prostaglandin E₂ (PGE₂). The activity of this receptor is mediated by G(s) proteins that stimulate adenylate cyclase. The subsequent raise in intracellular cAMP is responsible for the relaxing effect of this receptor on smooth muscle.

订购热线: 4008-898-798

Applications

Western blotting

Predicted band size: 40 kDa

Positive control: A549 cells

Recommended dilution: 500-2000

Gel: 10% SDS-PAGE

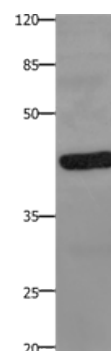
Lysate: 40 µg

Lane: A549 cells

Primary antibody: ml160303 (PTGER2 Antibody) at dilution 1/100

Secondary antibody: Goat anti rabbit IgG at 1/8000 dilution

Exposure time: 1 minute



ELISA

Recommended dilution: 1000-5000

联系电话: 4008-898-798, 021-61725725

联系QQ: 2881505695, 2881505696

邮箱: mlbio_cn@yeah.net

网址: www.mlbio.cn