

Anti-PTGER4 antibody

Cat. No.	ml160305
Package	25 µl/100 µl/200 µl
Storage	-20°C, pH7.4 PBS, 0.05% NaN ₃ , 40% Glycerol

Product overview

Description	Anti-PTGER4 rabbit polyclonal antibody
Applications	ELISA, WB
Immunogen	Synthetic peptide of human PTGER4
Reactivity	Human
Content	0.6 mg/ml
Host species	Rabbit
Ig class	Immunogen-specific rabbit IgG
Purification	Antigen affinity purification

Target information

Symbol	PTGER4
Full name	prostaglandin E receptor 4
Synonyms	EP4; EP4R
Swissprot	P35408

Target Background

The protein encoded by this gene is a member of the G-protein coupled receptor family. This protein is one of four receptors identified for prostaglandin E₂ (PGE₂). This receptor can activate T-cell factor signaling. It has been shown to mediate PGE₂ induced expression of early growth response 1 (EGR1), regulate the level and stability of cyclooxygenase-2 mRNA, and lead to the phosphorylation of glycogen synthase kinase-3. Knockout studies in mice suggest that this receptor may be involved in the neonatal adaptation of circulatory system, osteoporosis, as well as initiation of skin immune responses.

订购热线: 4008-898-798

Applications

Western blotting

Predicted band size: 53 kDa

Positive control: LoVo cells

Recommended dilution: 500-2000

Gel: 8%SDS-PAGE

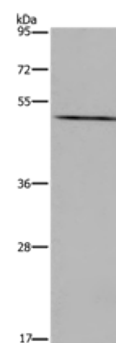
Lysate: 40 µg

Lane: LoVo cells

Primary antibody: ml160305 (PTGER4 Antibody) at dilution 1/600

Secondary antibody: Goat anti rabbit IgG at 1/8000 dilution

Exposure time: 1 minute



ELISA

Recommended dilution: 2000-5000

联系电话: 4008-898-798, 021-61725725

联系QQ: 2881505695, 2881505696

邮箱: mlbio_cn@yeah.net

网址: www.mlbio.cn