

Anti-FOSB antibody

Cat. No.	ml160336
Package	25 µl/100 µl/200 µl
Storage	-20°C, pH7.4 PBS, 0.05% NaN ₃ , 40% Glycerol

Product overview

Description	Anti-FOSB rabbit polyclonal antibody
Applications	ELISA, WB, IHC
Immunogen	Synthetic peptide of human FOSB
Reactivity	Human, Mouse
Content	0.3 mg/ml
Host species	Rabbit
Ig class	Immunogen-specific rabbit IgG
Purification	Antigen affinity purification

Target information

Symbol	FOSB
Full name	FBJ murine osteosarcoma viral oncogene homolog B
Synonyms	AP-1; G0S3; GOS3; GOSB
Swissprot	P53539

Target Background

The Fos gene family consists of 4 members: FOS, FOSB, FOSL1, and FOSL2. These genes encode leucine zipper proteins that can dimerize with proteins of the JUN family, thereby forming the transcription factor complex AP-1. As such, the FOS proteins have been implicated as regulators of cell proliferation, differentiation, and transformation. Alternatively spliced transcript variants encoding different isoforms have been found for this gene.

订购热线: 4008-898-798

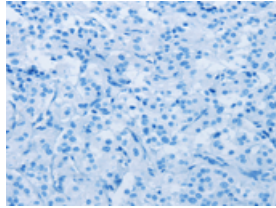
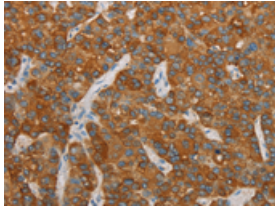
Applications

Immunohistochemistry

Predicted cell location: Cytoplasm

Positive control: Human liver cancer

Recommended dilution: 50-200

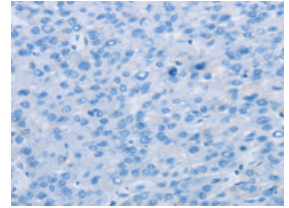
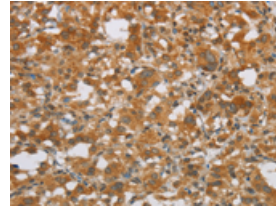


The image on the left is immunohistochemistry of paraffin-embedded Human liver cancer tissue using ml160336(FOSB Antibody) at dilution 1/20, on the right is treated with synthetic peptide. (Original magnification: $\times 200$)

Predicted cell location: Cytoplasm

Positive control: Human thyroid cancer

Recommended dilution: 50-200



The image on the left is immunohistochemistry of paraffin-embedded Human thyroid cancer tissue using ml160336(FOSB Antibody) at dilution 1/20, on the right is treated with synthetic peptide. (Original magnification: $\times 200$)

Western blotting

Predicted band size: 36 kDa

Positive control: Human kidney cancer and lung cancer tissue, human placenta tissue

Recommended dilution: 200-1000

Gel: 8%SDS-PAGE

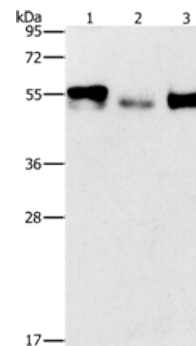
Lysate: 40 μ g

Lane 1-3: Human kidney cancer tissue, Human lung cancer tissue, human placenta tissue

Primary antibody: ml160336(FOSB Antibody) at dilution 1/200

Secondary antibody: Goat anti rabbit IgG at 1/8000 dilution

Exposure time: 10 minutes



ELISA

Recommended dilution: 2000-5000

联系电话: 4008-898-798, 021-61725725

联系QQ: 2881505695, 2881505696

邮箱: mlbio_cn@yeah.net

网址: www.mlbio.cn